

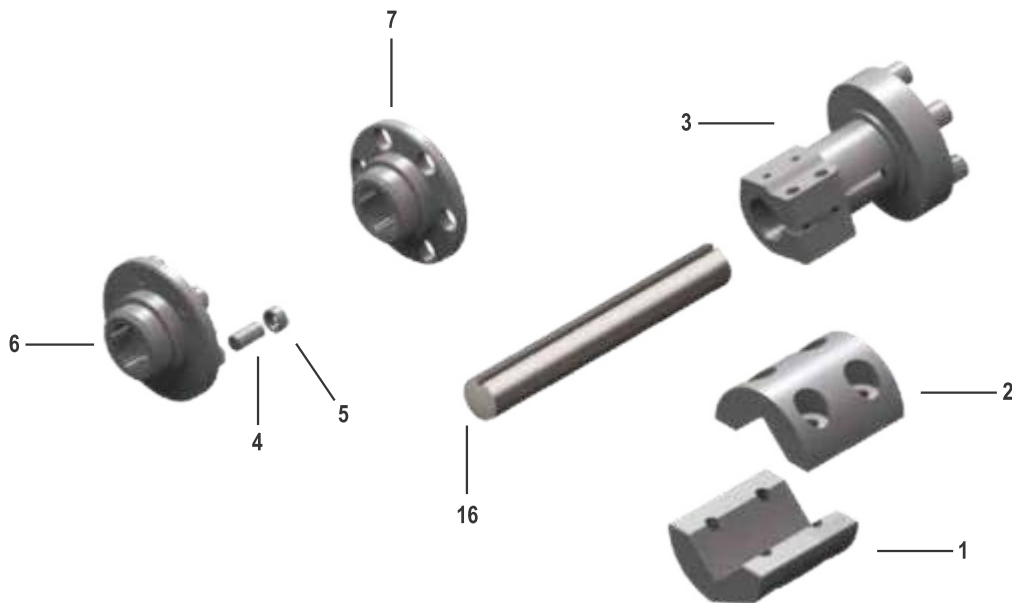
**GALAXY**



## **PROJECTILE SULZER SPARES**

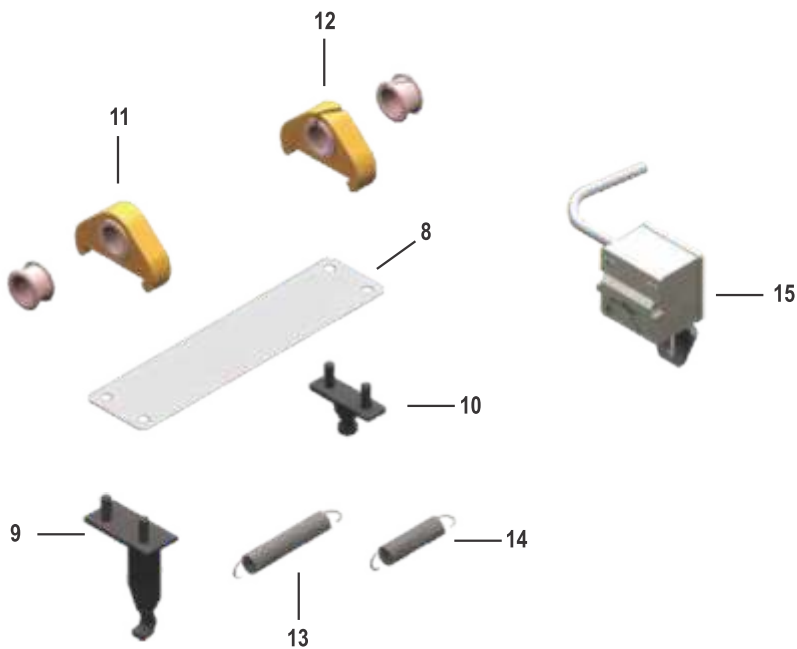


## COUPLING PIECES, CLAMPING FLANGES

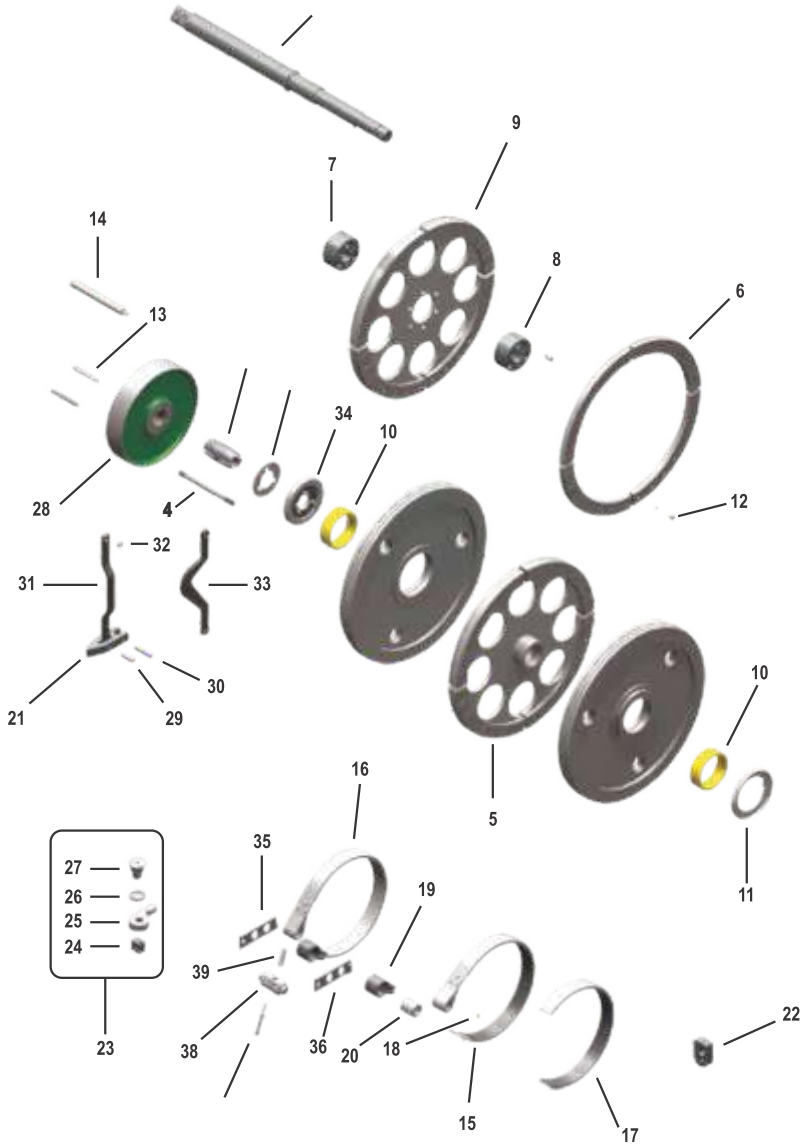


No	Art No	Designation
1	911 023 106	Coupling Half D40
2	911 123 107	Coupling Half D40
3	912 532 111	Clamping Flange L:116
	912 532 112	Clamping Flange L:186
4	911 132 331	Stud
5	912 132 333	Bush
6		Plug Coupling
7	911 159 205	Clutch
	911 359 067	Coupling Flange
8	911 114 929	Brake Band 0,10
	911 114 926	Brake Band 0,07
		Brake Band 0,20
		Brake Band 0,05
9	911 814 152	Angle (911 414 316)
10	912 514 286	Clamping Plate (911 814 291)
11	911 814 019	Eyelet Piece with eyelet D8,5
12	911 314 864	Eyelet Piece slotted D8,5
13	911 214 133	Spring weak
14	911 114 537	Spring hard
15	911 321 038	Sensing Head
16		Shaft Ø34 Length upon request

## BRAKE BAND

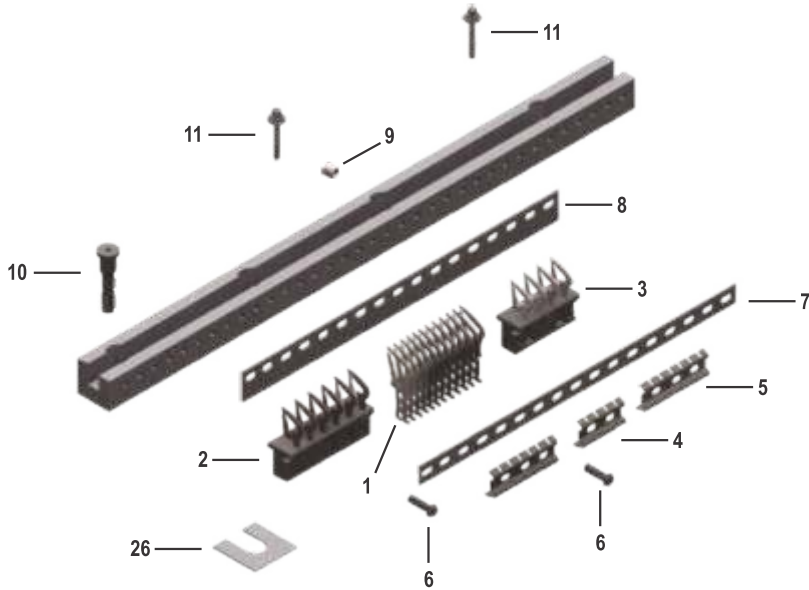


## DRIVE AND MACHINE BRAKE



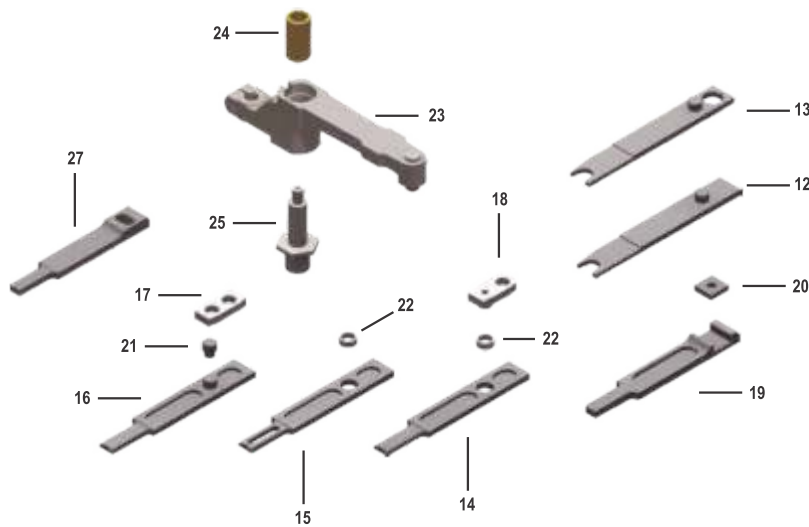
No	Art No	Designation
1	911 803 034	Drive Shaft excluding bearing
	911 103 156	Drive Shaft excluding bearing
	911 103 260	Drive Shaft excluding bearing
2	911 303 082	Taper Bush
	911 103 154	Bush
3	911 303 327	Wear Ring for pressure Disc
4	911 103 335	Bolt
5	912 503 073	Clutch Cross D92
	912 503 113	Clutch Cross D92
	912 503 097	Clutch Cross D80
	912 503 098	Clutch Cross D92
	911 803 102	Clutch Cross D92
6	911 203 185	Clutch Lining
	911 703 019	Clutch Segment set 8 pcs.
7	911 103 397	Clamping ring inside
8	911 103 398	Clamping ring outside
9	912 503 061	Coupling Disc D92
	911 803 101	Coupling Disc D92
10	912 103 278	Bush D92x102x30
	912 103 198	Bush D80X92X30
11	911 303 281	Plate Disc
	911 303 282	Plate Disc
12	911 200 925	Hollow rivet D4,9X10,7
13	911 303 336	Pin
	911 303 441	Pin 12x78,8
	911 203 112	Pin
14	911 203 123	Stud
15	911 804 028	Brake Band
16	911 804 027	Brake Band with clamping piece
	911 804 055	Br.Band with clamp,piece no rivet
17	911 304 368	Brake lining with rivet holes
		Br. lining with channels,no rivet
18	911 200 274	Hollow rivet
19	911 804 026	Clamp. piece with eccentric bush
	912 504 021	Clamp.piece with centered bush
20	911 704 006	Eccentric bush for Clamp.piece
	912 104 215	Bush for Clamping piece
21	911 303 313	Clutch lever
22	911 303 163	Holding Bracket
23	911 803 072	Hand Wheel Stop
24	911 303 489	Clamping piece
25	911 303 398	Locking lever
26	911 303 491	Torsion spring
27	911 303 437	Support Bush
28	912 503 041	Brake Drum without angle disc
29	921 798 300	Pin 12x40
30	911 203 134	Pin 12x58
31	911 803 062	Bar
32	912 103 332	Bush 12,1/15,22x8
33	911 803 117	CONTROL BAR
34	911 803 064	Pressure Disc
35	911 204 198	Front link
36	911 204 108	Rear link
37	921 337 000	screw M10X80
38	911 104 106	stud
39	927 711 830	pressure Spring

## GUIDE TOOTH



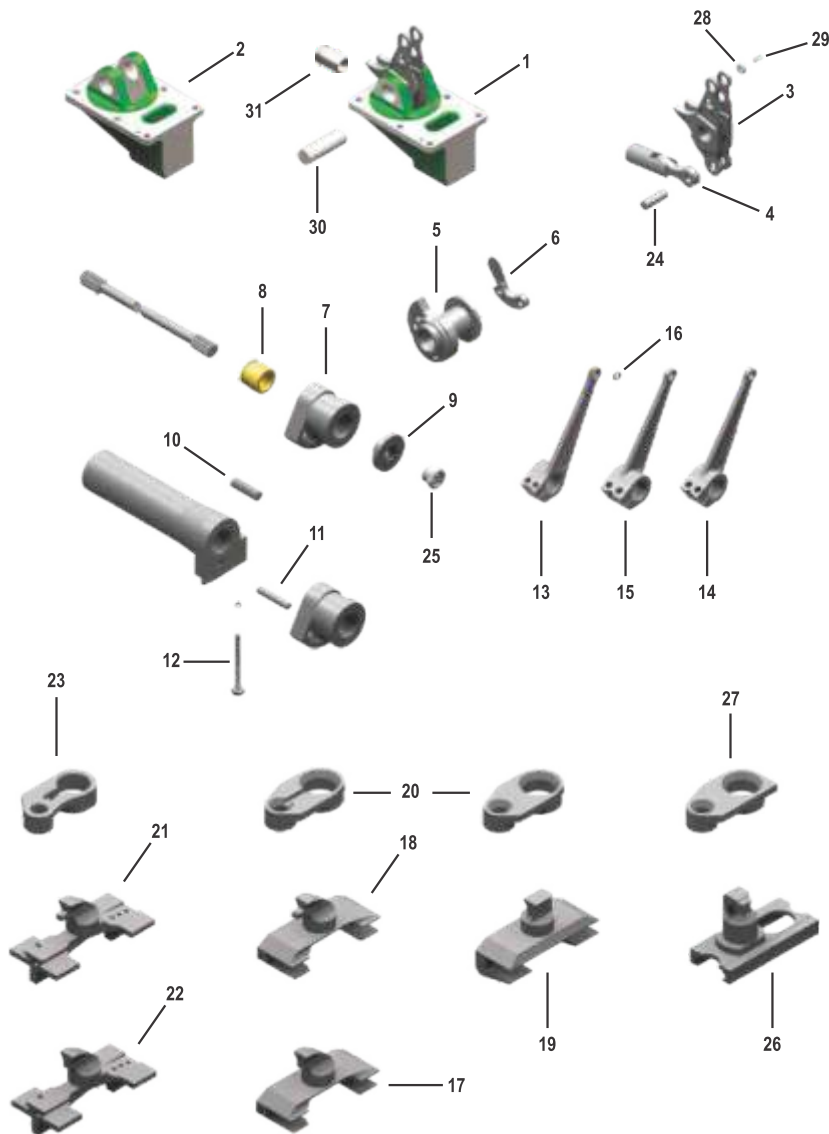
No	Art No	Designation
1	911 123 337	Guide Tooth D1
	911 123 732	Guide Tooth D2
2	911 323 622	Block Guide Tooth D1/D12 6
	911 323 452	Block Guide Tooth D2 6
3	911 323 623	Block Guide Tooth D1/D12 4
	911 323 453	Block Guide Tooth D2 4
4	911 123 308	Guide tooth holder short
5	911 123 307	Guide tooth holder long
6	911 323 216	Special screw M4x23
7	911 323 212	Guide tooth attachment band 73"
	911 123 663	Guide tooth attachment band 85"
	911 123 665	Guide tooth attachment band 110"
	911 123 667	Guide tooth attachment band 130"
	911 323 284	Guide tooth attachment band 143"
	911 123 669	Guide tooth attachment band 153"
		Guide tooth attachment band 183"
	911 123 571	Guide tooth attachment band 213"
8	911 323 211	Lower steel band 73"
	911 223 652	Lower steel band 85"
	911 223 644	Lower steel band 110"
	911 223 656	Lower steel band 130"
	911 323 283	Lower steel band 143"
	911 223 658	Lower steel band 153"
	911 123 799	Lower steel band 183"
	911 123 570	Lower steel band 213"
9	911 223 206	Pressure bolt G1/4X11
10	911 323 128	Special screw G1/4
11	921 011 571	Screw M5X35
	911 323 029	Hexagonal screw M5X35
	911 323 167	Special screw M5X36
12	912 526 007	Projectile Returner TW11
13	912 526 008	Projectile Returner PU11
14	911 826 008	Projectile Returner PU
	911 826 021	Projectile Returner PU
15		Projectile Returner PU Light
16	911 826 006	Projectile Returner D2
		Projectile Returner PU/TW11
17	911 126 103	Link TW11
18	911 326 057	Link PU
19	911 326 141	Projectile returner D1
	911 326 156	Projectile returner D1 P Heavy
	911 326 142	Projectile returner D2
	911 326 157	Projectile returner D2 Heavy
20	911 326 125	Slide Block 20x7,5
	911 326 127	Slide Block 20x10,5
21	911 126 124	Rivet pin
22	911 726 002	Bush D12/15X5,9
23	911 826 001	Roller lever returner side D16
	911 826 012	Roller lever returner side D18
24	912 119 232	Bearing bush
	911 719 002	Bearing bush
25	911 119 212	Rh Axle
26		Shim(different thicknesses)
27		Projectile returner D1
		Projectile returner D2

## PROJECTILE RETURNS



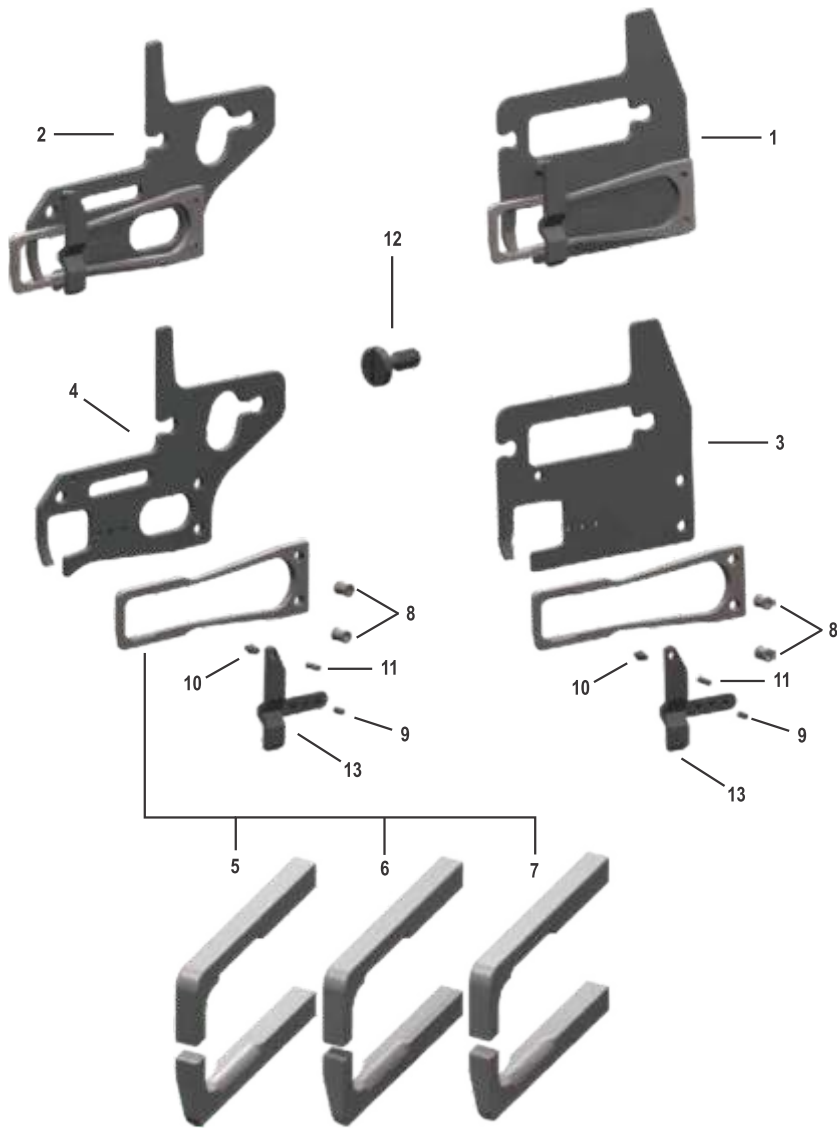


## PICKING MECHANISM



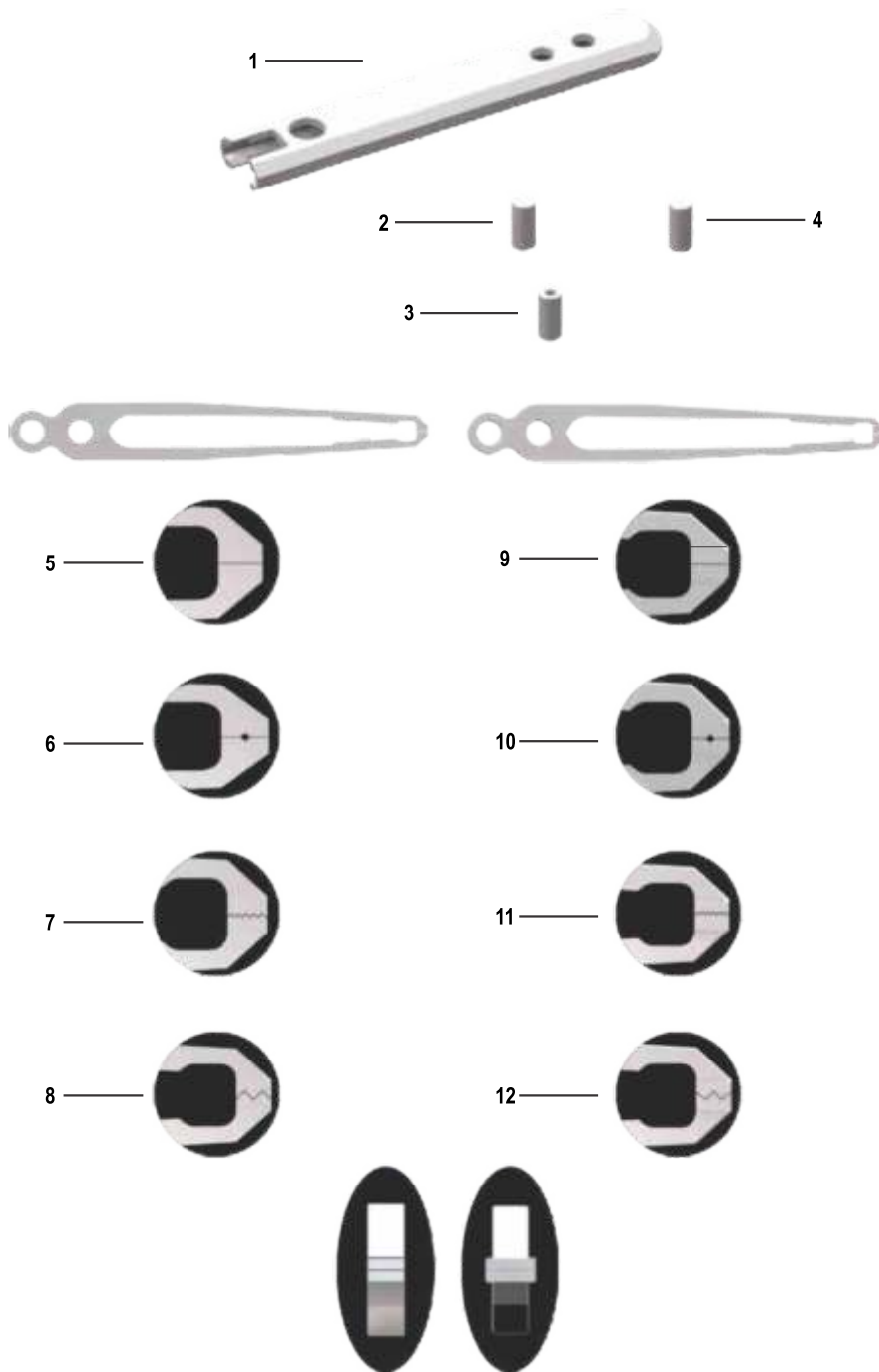
No	Art No	Designation
1	911 822 126	Picking Housing with Roller lever
	912 522 125	Picking Housing with Roller lever
2	911 822 125	Picking Housing
	912 522 126	Picking Housing
3	911 822 044	Picker Roller Lever
	912 522 116	Picker Roller Lever
4	911 822 054	Brake Plunger Piston L:83
	912 522 103	Brake Plunger Piston L:64,4
5	911 322 227	Picking Cam
	911 322 639	Picking Cam
6	911 322 067	Roller Holder
7	912 522 153	Tension Flange
	911 822 137	Tension Flange P7100
8	911 122 295	Bearing Bush
9	911 122 322	Tension Flange Cover
10	921 799 100	Cylindrical pin
	921 011 455	Cylindrical pin
11	921 011 432	Stud M12x65
	921 022 000	Stud 1/2" x 60
	921 011 040	Stud M16x70
12	911 322 302	Setting screw M14X1,5 L:110 mm
	911 322 335	Setting screw M14X1,5 L:118 mm
	911 322 537	Setting screw M14X1,5 L:160 mm
	911 322 527	Setting screw M14X1,5 L:168 mm
13	911 822 065	Picking Lever D37 mm
	911 822 024	Picking Lever D35 mm
14	911 822 174	Picking Lever D37 mm Steel
15	911 822 108	Picking Lever D38 mm Steel
16	911 722 012	Bush 13,2x11x4
17	911 322 278	Picking Shoe D1 PU
18	911 622 051	Picking Shoe D1 PU with nose tip
	911 322 279	Picking Shoe D2 PU
19	911 122 190	Picking Shoe D1 TW11
20	911 322 147	Picking Link D1 Pu-TW11
	911 322 152	Picking Link D2 Pu
21	742 768 000	Picking Shoe D1 P7100 Elastic
	740 854 000	Picking Shoe D1-D12 Light
22	911 322 541	Picking Shoe D2 P7100
23	911 322 397	Picking Link P7100 D1
	911 322 896	Picking Link P7100 D1 D2
	911 322 525	Picking Link P7100 D1 D2
	740 850 000	Picking Link P7100 D1 D2
24	911 322 097	Hollow Bolt D15X43MM
	911 122 239	Split Pin L:42
	911 322 011	Split Pin L:34,9
25	921 866 010	Oil level glass
26		Picking Shoe PS model
27		Picking Link PS type
28		Roller for plunger pu
		Roller for plunger P7100
29		Carbide pin D15
		Carbide pin D16
30	911 322 404	BOLT
31	911 722 013	Bush D25/32/34x53,5

## PROJECTILE FEEDER ES D1, D2, D12



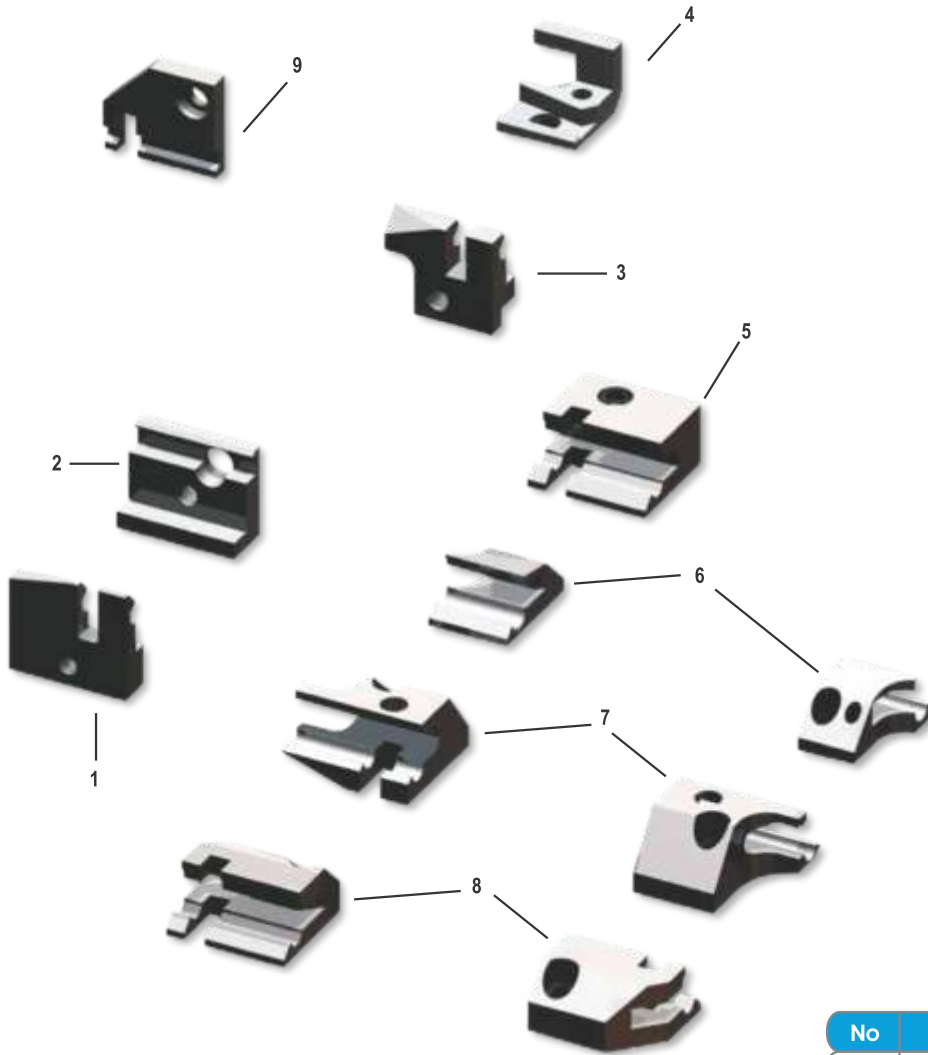
No	Art No	Designation
1	911 819 062	Feeder Gripper ES D1 smooth
	911 819 068	Feeder Gripper ES D1 grooved
	911 819 156	Feeder Gripper ES D1 Knurled
	911 819 071	Feeder Gripper ES D2 smooth
	911 819 074	Feeder Gripper ES D2 grooved
	911 819 078	Feeder Gripper ES D2 Knurled
2	911 819 157	Feeder Gripper ES D1 smooth
	911 819 069	Feeder Gripper ES D1 grooved
		Feeder Gripper ES D1 Knurled
	911 819 347	Feeder Gripper ES D12 smooth
	911 819 348	Feeder Grip. ES D2-D12 knurled
		Feeder Grip. ES D2-D12 grooved
3	911 119 245	RH Plate ES D1
	911 119 307	RH Plate ES D2
4	911 319 329	RH Plate ES D1
	911 319 776	RH Plate ES D2-D12
5	911 319 108	Feeder gripper ES D1 smooth
	911 319 124	F. gripper ES D2-D12 smooth
6	911 319 252	Feeder gripper ES D1 grooved
	911 319 253	Feeder gripper ES D2 grooved
7	911 319 796	F.Gripper knurled ES D2-D12
	911 319 365	F.Gripper knurled ES D1
8	911 119 135	Rivet D3,5X5,5MM
	911 119 308	Rivet D3,5X6,2MM
9	911 219 136	Special Rivet
10	911 119 199	Special Ring
		Special Ring D2-D12
11	911 319 406	Rivet D1,8 L:10,2 MM
12	911 219 220	Special screw
13	911 119 173	RH Guide piece

## PROJECTILES AND GRIPPERS D1, D2, D12



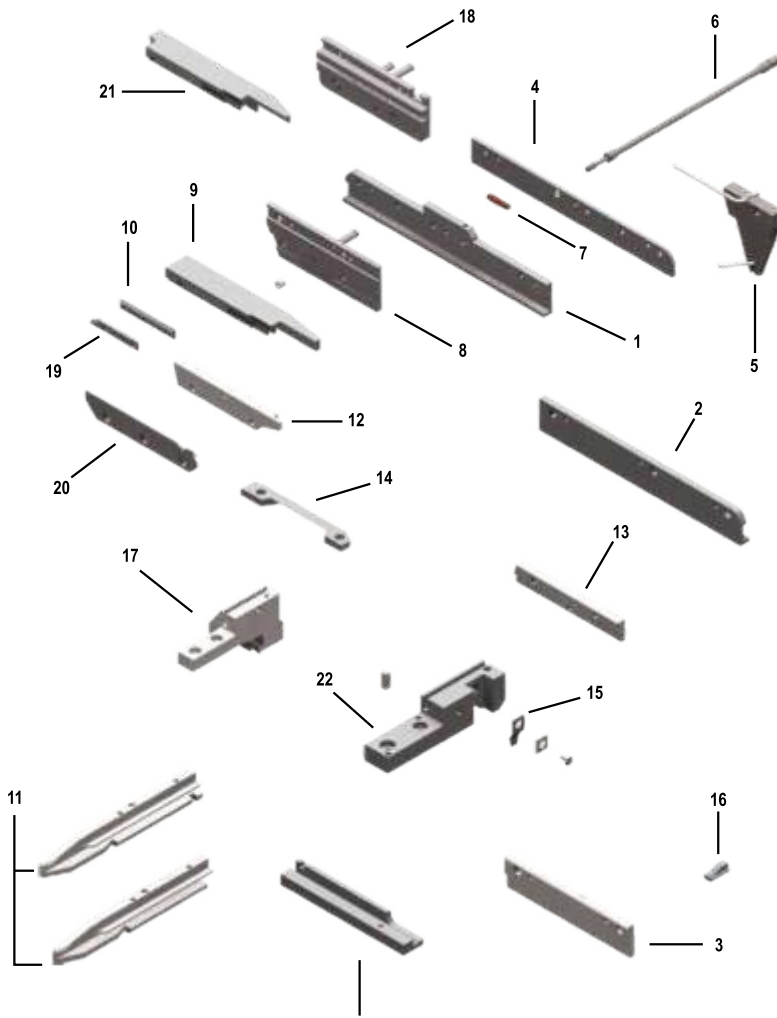
No	Designation
1	Projectile Body D1
	Projectile Body D12 Light
	Projectile Body D2
	Projectile Body D12 Light P7300
2	Projectile rivet 4,49x7,45 (911 312 004)
	PROJECTILE BOLT PEEK HP 4,5X6,3
	PROJECTILE BOLT HP 4,5X6,3
3	Projectile rivet with hole
4	Projectile rivet D2 4,5X9,6 (911 112 132)
	<b>D1 PROJECTILE GRIPPERS</b>
5	P.Gripper smooth D1 1900 GR.
	P.Gripper smooth D1 2200 GR.
	P.Gripper smooth D1 2500 GR.
6	P.Gripper D1 With groove 2200 gr.
	P.Gripper D1 With groove 2500 gr.
7	P.Gripper D1 2500 gr grooved
	P.Gripper D1 2500 gr grooved
8	P.Gripper D1 W Type 2500 gr.
	P.Gripper D1 W Type 2800 gr.
9	P.Gripper D1 1900 GR Smooth 2,2x4 mm
	P.Gripper D1 2200 GR Smooth 2,2x4 mm
	P.Gripper D1 2500 GR Smooth 2,2x4 mm
10	P.Gripper D1 2200 GR with groove 2,2x4 mm
	P.Gripper D1 2500 GR with groove 2,2x4 mm
11	P.Gripper D1 2500 gr grooved 2,2x4mm
	P.Gripper D1 2800 gr grooved 2,2x4mm
12	P.Gripper D1 W Type 2500 gr. 2,2x4
	P.Gripper D1 W Type 2800 gr. 2,2x4
	<b>D1 KNURLED PROJECTILE GRIPPERS</b>
	P.Gripper D1 2200 GR Knurled 2,2x4 mm
	P.Gripper D1 2500 GR Knurled 2,2x4 mm
	P.Gripper D1 2800 GR Knurled 2,2x4 mm
	<b>D12 PROJECTILE GRIPPERS</b>
9	P.Gripper 2200 gr smooth D12 3,8X5mm
	P.Gripper 2500 gr smooth D12 3,8X5mm
11	P.Gripper 2800 gr grooved D12 3,8X5 mm
	P.Gripper 2500 gr grooved D12 3,8X5 mm
	P.Gripper 3000 gr grooved D12 3,8X5 mm
	P.Gripper 2800 gr knurled D12 3,8X5 mm
	P.Gripper 2500 gr knurled D12 3,8X5 mm
	P.Gripper 3000 gr knurled D12 3,8X5 mm
	P.Gripper 3500 gr knurled D12 3,8X5 mm
	<b>D2 PROJECTILE GRIPPERS</b>
5	P.Gripper 2200 gr smooth D2 4x3,5mm
7	P.Gripper 3000 gr grooved D2 4x3,5mm
11	P.Gripper 3000 gr grooved D2 4x5mm
	P.Gripper 2800 gr grooved D2 4x5mm
	P.Gripper 3000 gr knurled D2 4x5mm
	P.Gripper 2800 gr W jaw D2 4x5mm
	P.Gripper 3000 gr W jaw D2 4x5 mm
	P.Gripper 4000 gr knurled D2 4x5 mm
	P.Gripper 4000 gr grooved D2 4x5 m

## PROJECTILE GUIDE BLOCKS AND FRONT GUIDE INSERTS D1/D12/D2



No	Art No	Designation
1	911 316 528	Proj.Guide Block MS D1
	911 116 294	Proj.Guide Block MS D2
2	911 116 164	Front Guide insert D1
	911 116 292	Front Guide insert D2
3	911 316 884	Proj.Guide block MS P7100
	911 316 703	Proj.Guide block MS P7100
	911 616 053	Proj.Guide insert D2
4	911 316 462	Front Guide Insert P7100
		Front Guide Insert P7100
	911 316 814	Front Guide Insert D2
5	911 116 162	PROJ.guide block ES D1
	911 116 302	PROJ.guide block ES D2
6	911 316 454	Proj.Guide Block ES D1 P7100
7	912 311 119	Projectile Guide ES D1 D12
8	911 416 264	Projectile guide insert D1 D12
	911 416 265	Projectile guide insert D2
9	911 416 223	Projectile guide insert

## PICKING LOCK

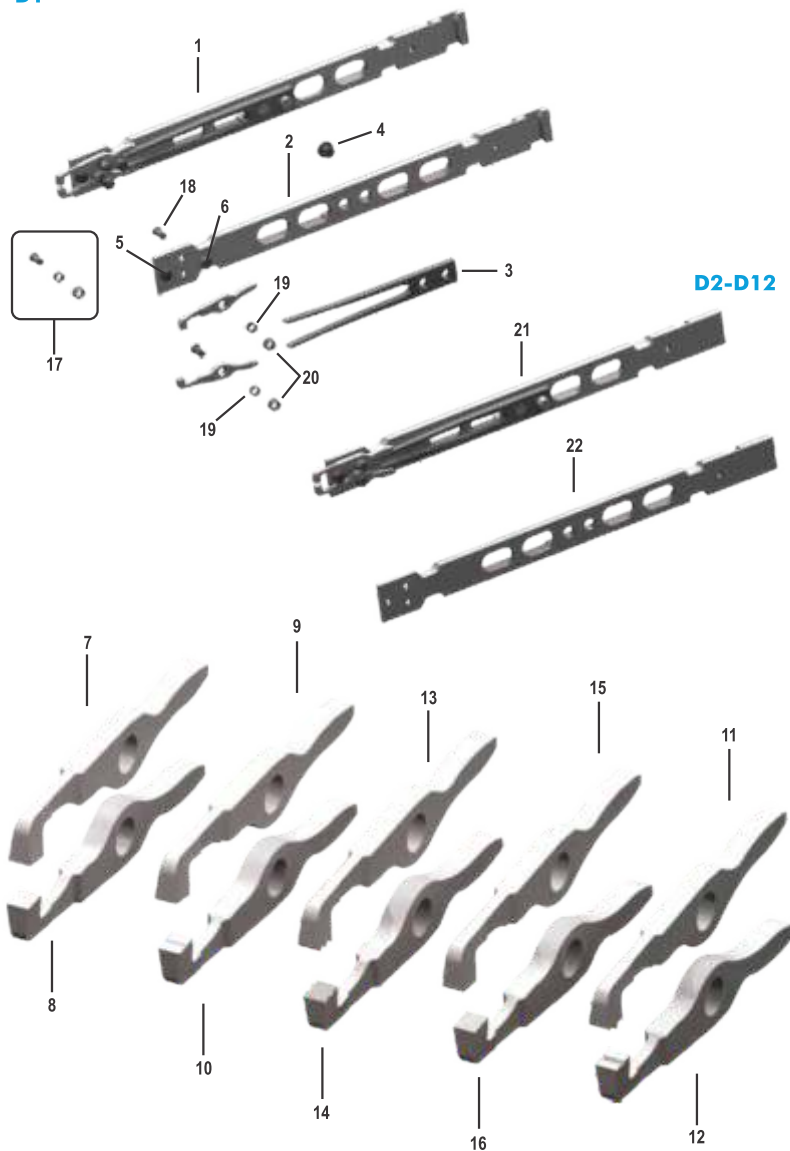


No	Art No	Designation
1	911 316 402	Proj.Feeder Front Guide Ms
2	911 116 193	Proj.Feeder Front Guide Ms Tw11
3	911 316 025	Proj.Feeder Guide ES L:189,5MM
	911 116 155	Proj.Feeder Guide ES
4	911 316 444	Rear Guide rail
	911 316 128	Rear Guide rail
5	911 316 443	Selector Lubricating Nozzle
6	911 116 232	Special screw M6 L:293 MM
	911 316 744	Special screw M6 L:292,5 MM
7	911 316 439	Spacing bush L:30
8	911 716 009	Centering plate
	912 116 113	Centering Plate Tw11
9	911 316 272	Upper guide rail Ms D1(911316747)
	911 316 173	Upper guide rail Ms D2
	911 316 572	Upper guide rail Ms D1
	911 316 117	Upper guide rail Ms D1
	911 316 175	Upper guide rail Es D2
10	911 116 150	Upper Guide plate
11	911 116 161	Upper Guide rail Es D1
	911 416 062	Upper Guide rail Es D12
	911 316 726	Upper Guide rail Es D1
	911 316 269	Upper Guide rail Es D1
	911 316 468	Upper Guide rail Es D2
	911 416 263	Upper Guide rail Es D12
	911 816 129	Upper Guide rail Es D12
	911 416 185	Up. Guide rail Es D1 D12
	911 316 486	Upper Guide rail Es D1
	911 416 262	Upper Guide rail Es D2
	911 816 128	Upper Guide rail Es D2
	911 316 174	Upper Guide rail Es D1
12	911 316 268	SL Guide Rail
13	911 116 194	Picker Guide
14	911 116 190	Cover Plate MS
	911 116 189	Cover Plate MS
15	911 316 236	Flat Spring L40,5 MM
16	911 116 187	Weft carrier stop
17	911 316 324	Front picking block D1 MS
	911 116 177	Front picking block D1 ES
18	911 416 058	Centering Rail L:161mm
	911 416 164	Centering Rail L:164mm
19	911 316 659	Upper guide plate P7100
20	911 416 089	SL Guide rail P7100 L: 164
	911 316 907	SL Guide rail P7100 L: 161
21	911 416 188	Upper Guide rail Ms P7100
	911 416 255	Upper Guide rail Ms P7100
	911 316 915	Upper Guide rail Ms P7100
	911 316 834	Upper Guide rail Ms P7100
	742 246 000	Upper Guide rail Ms P7100 D2
	740 739 000	Upper Guide rail Ms P7100 D1 D12
	911 816 104	Upper Guide rail P7100 D2 L: 213,5
	911 416 159	Upper Guide rail P7100 D2 L: 213,5
	911 316 916	Upper Guide rail Ms P7100 D2
22	911 116 180	Rear Block MS D1
	911 116 306	Rear Block ES D2
	911 116 178	Rear Block ES D1
	740 926 000	Rear Block ES D12 D2



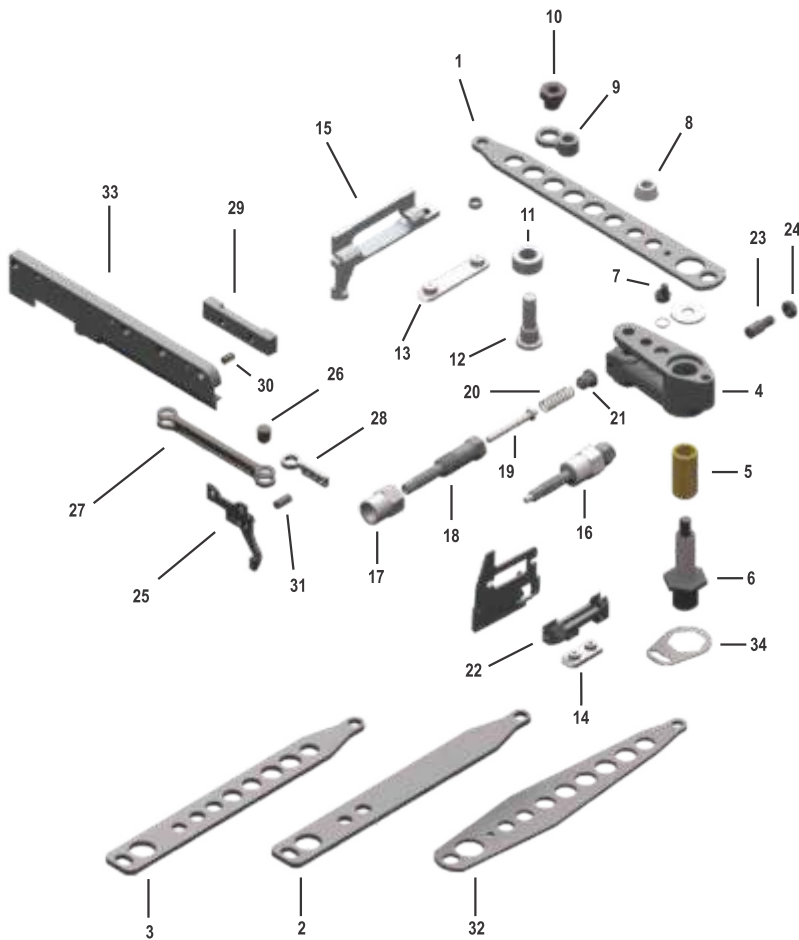
# PROJECTILE FEEDER MS, D1, D2, D12

**D1**



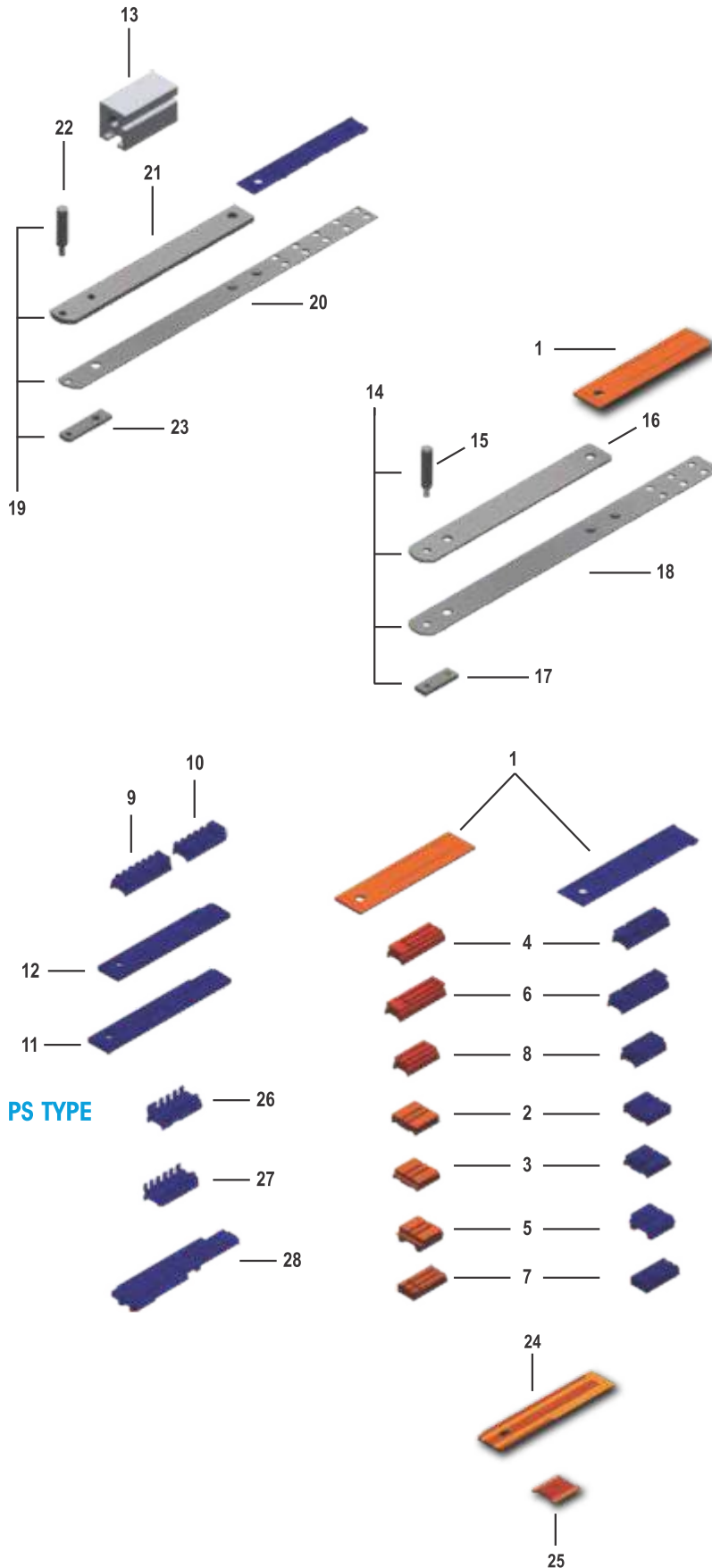
No	Art No	Designation
	911 819 236	P.Feeder Smooth Ms D1 911819201
	911 819 234	P.Feeder with groove Ms D1
		Proj.Feeder V TYPE Ms D1
	911 819 239	P.Feeder Ms D1 diamond knurled
	911 819 133	P. Feeder Smooth MW2 D1
	911 819 182	P.Feeder with groove Mw2 D1
	911 819 409	RH BAR D1
	911 819 106	RH BAR D1 WM2
	911 319 285	Gripper Spring
	911 219 183	Centering screw
	911 219 233	Stop Rivet
	911 319 009	Stop Rivet long
	911 319 789	Up. gripper smooth without coun.
	911 319 119	Upper gripper smooth D2
	911 319 791	Lower gripp.smooth without coun.
	911 319 121	Lower gripper smooth D2
	911 319 787	Up.grip. With groove without coun. D1
	911 319 788	Lower grip. Groove without coun. D1
		Upper gripper V type without coun D1
		Lower gripp. V type without coun D1
	911 319 325	Upper gripper grooved D2-D12
	911 319 324	Lower gripper grooved D2-D12
	911 319 792	Upper gripper D1 Knurled
	911 319 474	Upper gripper D2-D12 knurled
	911 319 793	Lower gripper D1 knurled
	911 319 475	Lower gripper D2-D12 Knurled
	911 819 124	Special bol with bush
	911 319 238	Special screw
	911 319 247	Bush D2,8/4X2,56
	911 319 239	Special nut M2,6X0,35
	911 819 341	P.Feeder smooth D2-D12 L:182
	911 819 344	P.Feeder grooved D2-D12 L:182
	911 819 336	P.Feeder Knurled D2-D12 L:182
		P.Feeder smooth D2-D12 L:191
		P.Feeder grooved D2-D12 L:191
		P.Feeder Knurled D2-D12 L:191
		Feeder Bar D2-D12 L: 182
	911 819 410	Feeder Bar D2-D12 L: 191

## PROJECTILE FEEDER DRIVE



No	Art No	Designation
1	911 319 168	Rh Lever
	911 319 302	Rh Lever D2 D10
2	911 119 200	Rh Lever D1 (912 519 065)
3	911 319 157	Rh Lever
	911 619 004	Rh Lever
4	911 819 093	Pr.Feeder Roller Lever D15,91
	911 819 094	Pr.Feeder Roller Lever D18
5	912 119 232	Bearing Bush
	911 719 002	Bearing Bush
6	911 119 212	Projectile feeder axle G1/2 D15,91
	911 619 016	Proj. feeder axle M24X1,5 D15,91
	911 319 275	Proj. feeder axle M24X1,5 D18
7	911 319 167	Eccentric stud
8	911 319 169	Spacing Bush
9	911 319 097	Spacing piece
10	911 319 098	Eccentric Stud
11	911 300 015	Roller D15/25X11,8MM
12	911 819 044	ROLLER BOLT
		ROLLER BOLT
13	911 319 429	Projectile feeder link MS
14	911 319 301	Projectile feeder link ES D10
	911 319 431	Feeder link ES D9 (911319176)
15	912 119 215	Sliding Piece Ms
	911 719 004	Sliding Piece Ms light
16	911 819 048	Stop Damper
17	911 319 081	Special Nut
18	911 319 159	Stop Pin
19	911 319 078	Pin
20	911 319 033	Pressure Spring
21	911 319 079	Special screw
22	911 319 282	Sliding piece ES D10
	911 119 134	Sliding piece ES D9
23	911 119 302	Stud m8x0,75
24	911 131 119	Nut
25	740 249 000	Projectile feeder driver
26	741 300 000	Sliding bolt
27	741 087 000	Projectile feeder link
28	911 319 872	Adapter
29	911 319 832	Sliding nut
30	911 319 445	Bolt 6,1x9,6
	911 319 833	Bolt 6,04x9,6
31	921 791 500	Precision pin 4x12
32	911 319 654	Rh lever
	740 275 000	Rh lever
	911 319 477	Rh lever
33	740 622 000	Guide Rail
34	911 326 037	Safety Plate

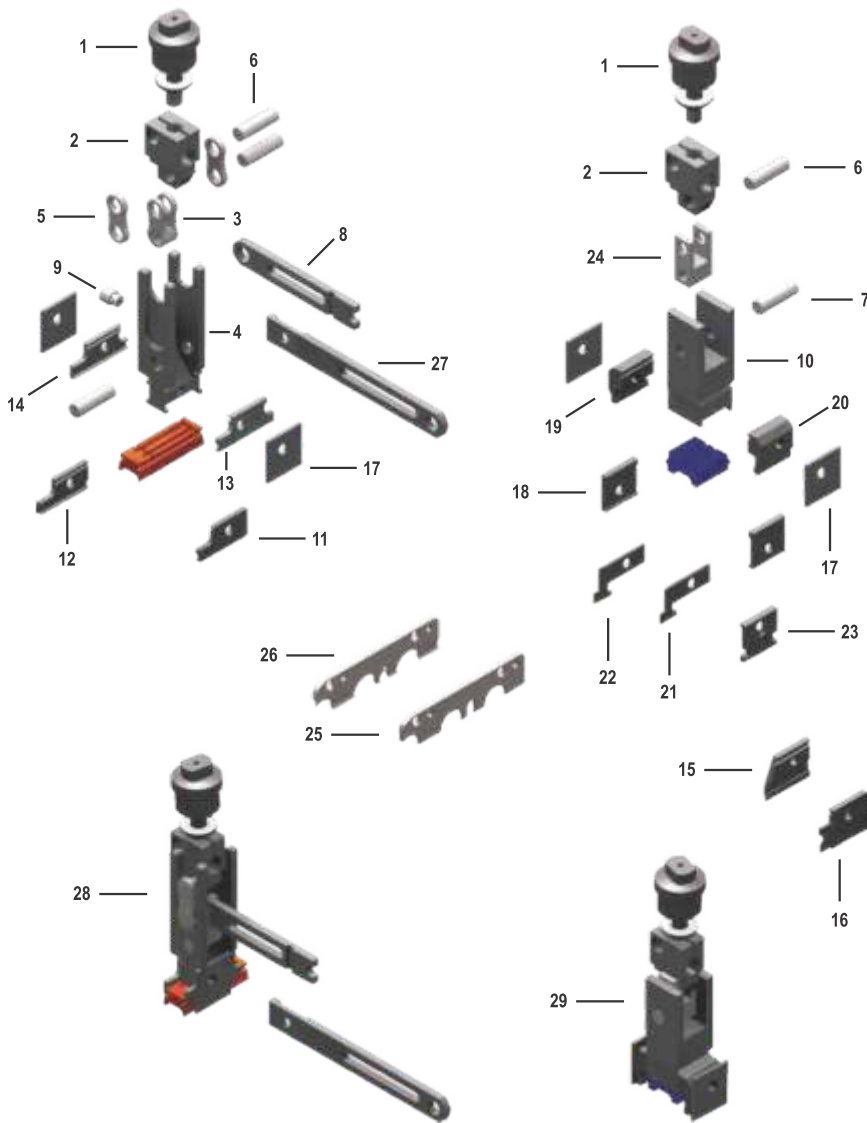
## PROJECTILE BRAKE



PS TYPE

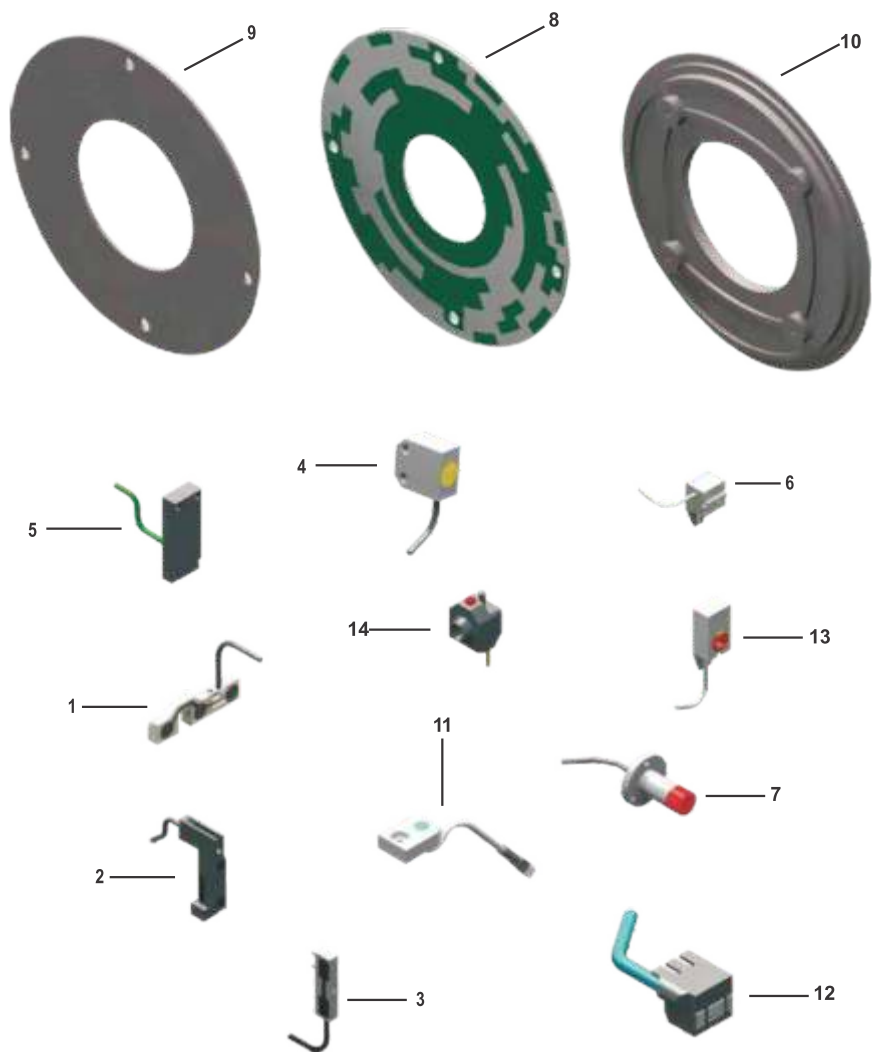
No	Art No	Designation
1	911 127 172	Lower Brake without naps
	911 327 003	Lower Brake with naps brown
	911 327 689	Lower Brake with naps blue
	911 327 689	Lower Brake with naps green
	911 327 004	Lower brake with naps brown D2
	911 327 004	Lower brake with naps blue D2 C
2	911 127 170	Rear Brake Brown
	911 327 712	Rear Brake Blue C
3	911 327 059	Rear Brake Brown
	911 327 704	Rear Brake Blue C
4	911 127 175	Front Brake Brown
	911 327 703	Front Brake Blue C
5	911 327 157	Rear Brake PU Brown
	911 327 692	Rear Brake PU Blue C
	911 327 062	Rear Brake PU Brown D2
	911 327 701	Rear Brake PU Blue D2 C
	911 127 178	Rear Brake L:30,80 Brown
	911 327 624	Rear Brake L:30,80 Blue C
6	911 327 353	Front Brake Brown PU D1
	911 327 353	Front Brake Blue Pu D1 C
	911 327 353	Front Brake Green Pu D1
7	911 127 177	Front Brake Brown PU D2
	911 327 699	Front Brake Blue PU D2 C
8	911 327 271	Rear Brake D1 C
9	911 327 677	Rear Brake D1
	911 327 677	Rear Brake D1Green
	911 327 694	Rear Brake D2
	740 397 000	Rear Brake D1 C
10	911 327 676	Front brake D1 (911 327 497)L:47,9
	911 327 676	Front brake D1 L:47,9 Green
	911 327 497	Front brake D1 L:47,9 Blue C
	911 327 693	Front brake D2
	911 327 718	Front brake D1 L:42,4
	911 327 718	Front brake D1 L:42,4 Green
	740 398 000	Front brake D1 L:42,4 Blue C
11	911 327 675	Lower Brake P7100 10 Pins
	911 327 675	Lower Brake P7100 10 Pins Green
	911 327 675	Lower Brake P7100 10 Pins Blue C
12	911 327 698	Lower Brake 8 Pins
	911 327 698	Lower Brake 8 Pins Green
	740 396 000	Lower Brake 8 Pins Blue C
13	911 327 793	Special Nut M10
14	911 825 018	Support plate
15	911 325 037	Shaft
16	911 325 003	Plate
17	911 325 035	Locking Plate
18		Plate for lower brake PU
19		Slide complete for lower brake p7100
20	911 825 027	Slide plate for 10 naps lower brake
	911 825 034	Slide plate for 8 naps lower brake
21	911 327 082	Guide plate
	911 327 106	Guide plate
22	911 325 037	Handle
23	911 325 105	Clamping Nut 40x14x4 m6/m8
24		Lower brake fiber TW11
25		Rear brake fiber Tw11
		Front brake fiber TW11
26	930 127 845	Rear Brake ps
27	930 127 844	Front Brake ps
28	930 127 843	Lower brak

## PROJECTILE BRAKE



No	Art No	Designation
1	911 127 151	Threaded Pin G1/8"
	911 827 016	Threaded Pin M12X0,5 Left
	911 327 338	Threaded Pin M10x0,5
2	911 127 115	Thread Block G1/8" D8
	911 327 184	Thread Block M12X0,5 Left D10
	911 127 182	Thread Block M10X0,5 D8
	911 327 717	Thread Block M12x0,5 Left D8
3	911 127 111	Forked Link D8
	911 327 227	Forked Link D10
4	911 827 003	Front holder of Brake D8
	911 827 019	Front holder of Brake D10
	911 827 004	Front holder of Brake D2
5	911 127 155	Link D8
	911 327 335	Link D10
6	911 327 229	Hollow Bolt D10X20 MM
	911 227 112	Hollow Bolt D8X20 MM
7	911 327 233	Hollow Bolt D10x31,9 MM
	911 227 114	Hollow Bolt D8x31,9 MM
8	911 127 127	Link
	911 327 284	Bar
9	911 127 157	Pin
10	911 127 118	Rear Brake Holder
	911 327 306	Rear Brake Holder
11	911 127 166	Front side plate D1
12	911 127 167	Front side plate D1
13	911 327 351	Front side plate D1
14	911 327 352	Front side plate D1
15	911 327 013	Front side plate D2
16	911 327 014	Front side plate D2
17	911 127 171	Holder Plate
18	911 127 168	Rear side plate
19	911 327 393	Rear side plate KS
20	911 327 212	Rear side plate WS
21	911 327 021	Front Guide plate K2
22	911 327 019	Rear Guide plate K2
23	911 327 018	Side plate K2
24	911 327 305	Forked Piece D10
	911 127 154	Forked Piece D8
25	911 327 671	Side Plate D1
	911 327 653	Side Plate D2
26	911 327 672	Side Plate D1
	911 327 654	Side Plate D2
27	911 327 222	Bar
28	911 827 013	Front Proj.Brake D1 PU
	912 527 015	Front Proj.Brake D1 TW11
	911 827 012	Front Proj.Brake D2 PU
29	911 827 014	Rear Proj.Brake D1
	912 527 016	Rear Proj.Brake D1
	911 827 033	Rear Proj.Brake D2

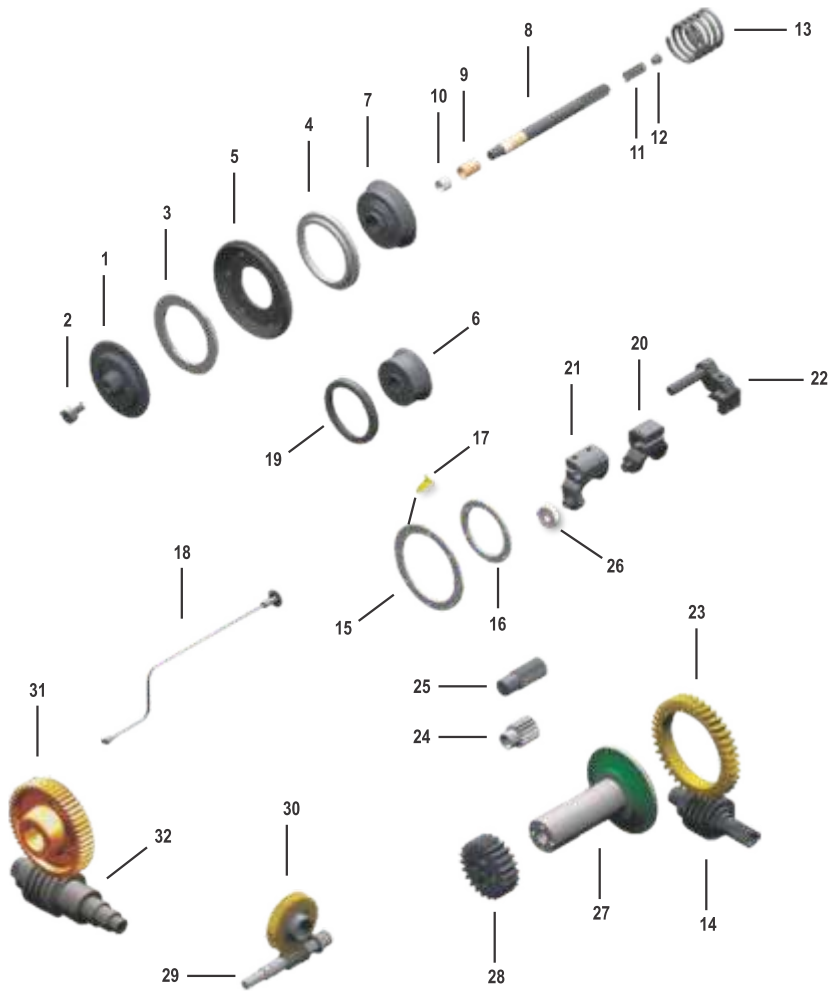
## SENSORS AND ELECTRICAL PARTS



No	Art No	Designation
1	845 029 000	PFR Sensor D1
	845 031 000	PFR Sensor D2
2	911 328 097	Projectile Sensor
3	911 321 058	Flight Trigger
4	927 009 861	Su Sensor
5	911 802 333	Angle Sensor
	911 180 684	Angle Sensor no cable
6	911 321 038	Sensing Head
7	930 202 669	Sensor for motor let off
8	911 603 018	Angle disc pu D 93
	911 303 768	Angle disc D 130
10		Angle disc D 130 P7100
11	911 325 019	Sensing head D1
	911 328 098	Sensing head D2
12	911 302 192	Holding Magnet
13	911 321 062	Feeler Head
14		Contact piece

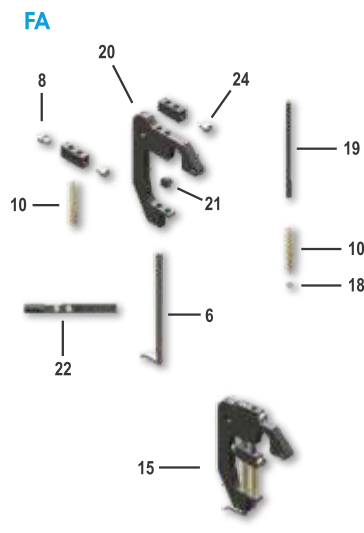
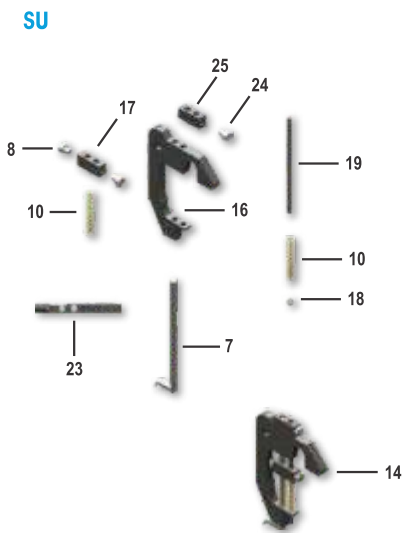
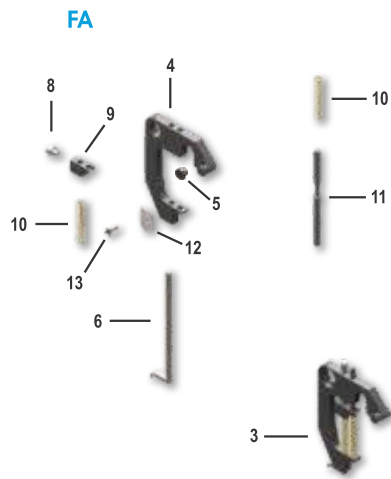
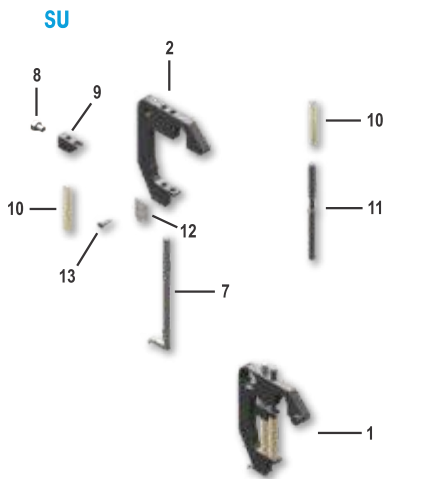


## WARP LET OFF AGGREGATE



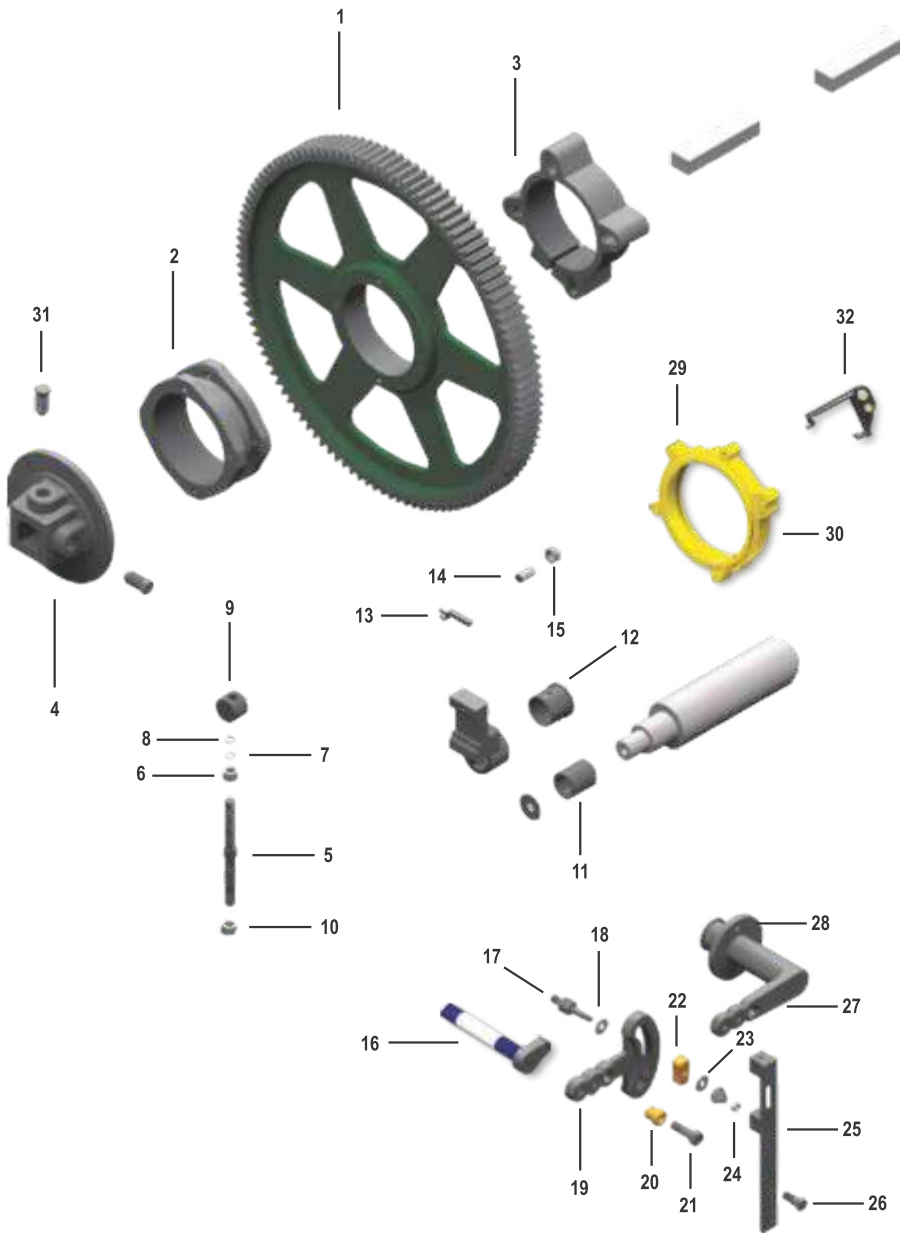
No	Art No	Designation
1	911 805 041	Cam Disc simple stroke 25 G
	912 505 049	Cam Disc double stroke 25 G
	911 805 042	Cam Disc 40G/28 G
	911 105 285	Cam Disc with 2 cams
	911 105 233	Cam Disc with 1 cam
2	911 305 374	Special Screw G1/8"
3	911 105 382	Clutch Lining 25 G
	911 305 285	Clutch Lining 28 G
	911 105 455	Clutch Lining 25 G
4	911 305 284	Brake ring 28 G
5	911 105 348	Switch wheel
	911 305 286	Switch wheel 28 G
6	911 305 262	Ratchet wheel 25 G (911 105 334)
	911 305 263	Ratchet wheel 20 G(911 105 381)
7	911 305 287	Ratchet wheel 28 G
8	912 505 023	KSA Shaft
	911 805 036	KSA Shaft long
9	911 205 288	Bush 20x25x40
10	911 105 256	Bush 20x24,8x20
11	911 305 369	Pressure spring
12	911 105 335	Spring plate
13	911 205 234	Let off drive spring
14	911 805 062	Worm 2/39
	911 805 061	Worm 1/39
	911 805 063	Worm 1/66
		Worm 3/38
	911 805 064	Worm 6/36
15	911 205 169	Brake Ring D178
16	911 205 196	Brake Ring D110x130
17		Rivet
		Rivet
18	911 105 299	Crank
19	911 305 295	Brake ring 25 G (911 105 349)
	911 305 296	Brake ring 20 G (911 105 384)
		Brake ring 25 G single piece
20	911 105 336	Roller lever
21	911 805 012	Roller lever
22	911 305 403	Axle support
23	911 305 321	Toothed rim 6:36
	911 305 425	Toothed rim 3:38
	911 305 318	Toothed rim 2:39
	911 305 317	Toothed rim 1:39
	911 305 319	Toothed rim 1:66
24	911 805 074	Gear wheel Z:14
25	911 105 313	Gear wheel Z:21
26	924 925 200	Ball Bearing
27	911 805 109	Gear Wheel Shaft
28	911 405 109	Gear wheel Z:22
29		Semco Shaft
30		Semco Brass Gear
31	742 658 000	Worm Wheel P7300
32	742 659 000	Worm Shaft Z:51 P7300

## WEFT END GRIPPERS



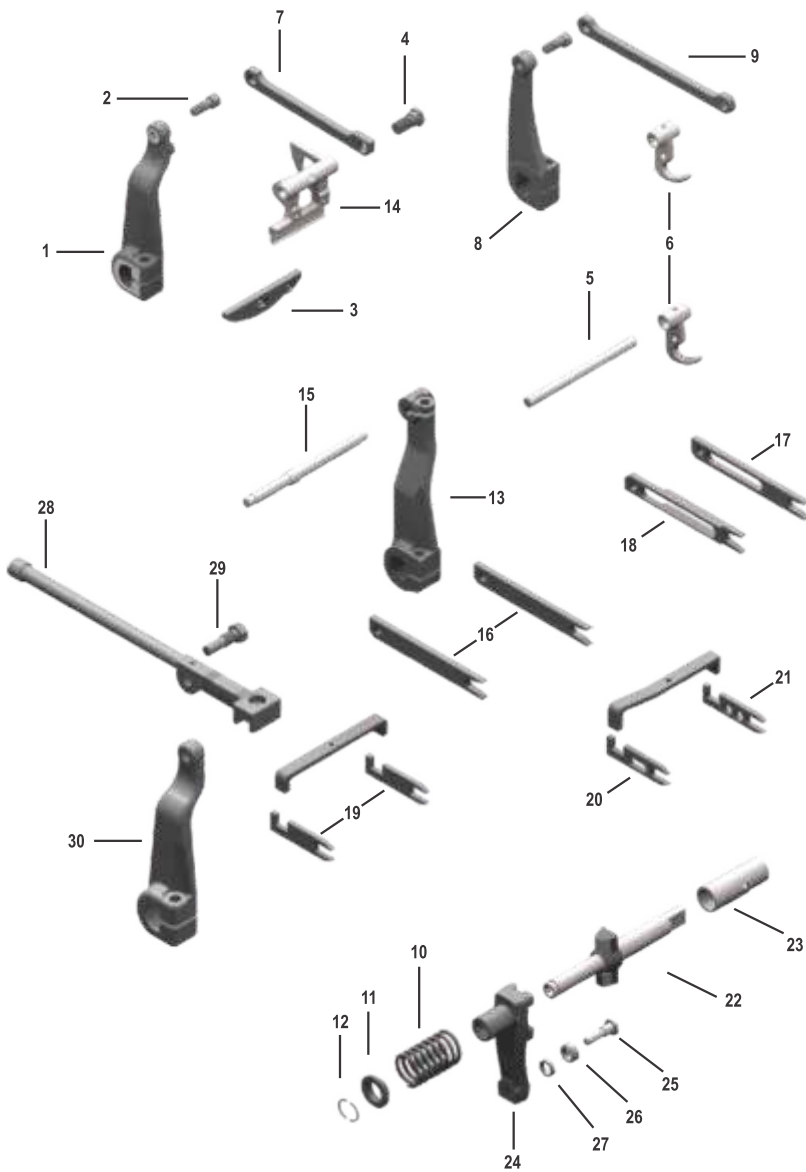
No	Art No	Designation
1	911 859 267	Weft End gripper Su LLS
	911 859 274	W.End gripper Su LLS hard spring
	911 859 344	Gripper Su LLS hard spring knurled
	912 536 111	Weft End gripper Su TLLS
2	911 659 062	Weft End Gripper Body Su
	911 659 067	Weft End Gripper Body Su knurled
3	911 859 268	Weft End gripper Fa LLS
	911 859 275	W.End gripper Fa LLS hard spring
	911 859 346	Gripper Fa LLS hard spring knurled 14
		Grip.Fa Hard,knur. w.side plate 12-13-14
		Gripper Fa Hard, w.side plate 4-12-13
	912 536 112	Weft End gripper Fa TLLS
4	911 859 273	Weft End Gripper Body FA
	911 859 290	Weft End Gripper Body FA knurled 14
		Body Fa Hard,knur. w.side plate 12-13- 14
5	911 232 165	Rivet Bolt (911 359 912)
		Modified !
6	911 132 290	Foot Fa D:2,5 mm (911 359 602)
		Modified !
		Foot Modified D:3 mm FA-SU
7	911 132 289	Foot Su D:2,5 mm (911 359 601)
8	911 232 168	Special Screw
9	911 132 167	Guide piece
10	911 232 169	Spring
	911 159 292	Spring Hard
11	911 236 152	Spring Rod L:50
	911 236 164	Spring Rod L:51
12	911 359 922	Supporting Side plate
13	921 873 346	Rivet for S.side plate
14	917 770 118	Weft end gripper su
	911 859 534	Weft end gripper SU knurled -23
15	917 770 119	Weft end gripper FA
	911 859 535	Weft end gripper FA knurled -22
16	911 459 086	Weft End Gripper Body Su
17	719 803 000	Guide piece
18	911 159 434	Spring cap
19	719 802 000	Spring Rod L:50
20	911 459 087	Weft End Gripper Body FA
	917 770 122	Weft End Gripper Body FA 20-21
21	911 359 912	Rivet stud
22	911 459 212	Weft End Gripper Body FA knurled
23	911 459 211	Weft End Gripper Body SU knurled
24	719 805 000	Screw m3x10
25	722 114 000	Opener attachment L:17

## WARP AND WARP LET OFF



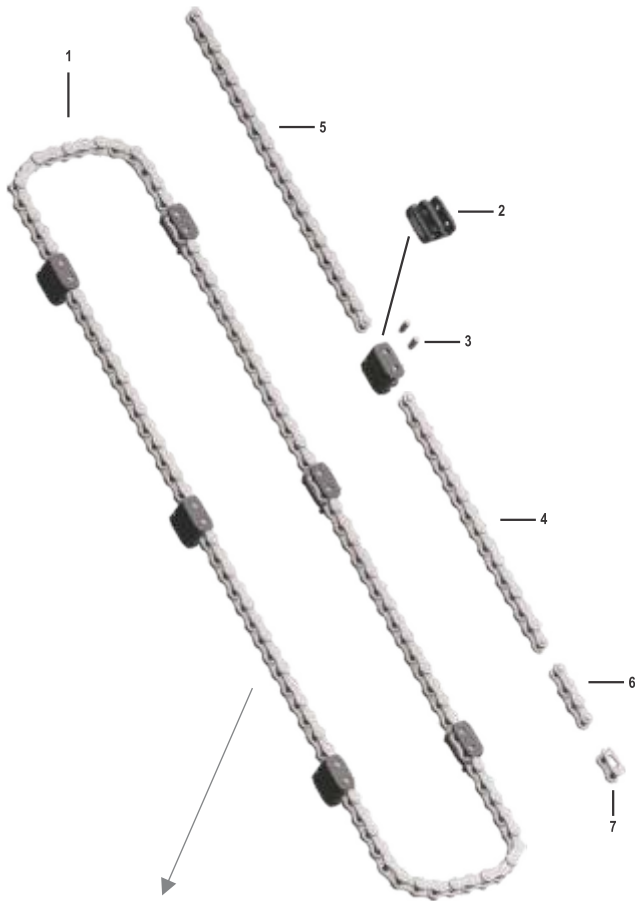
No	Art No	Designation
1	911 006 217	Gear Wheel D575 Z:113
	911 006 801	Gear Wheel D635 Z:125
	911 306 287	Gear Wheel D795 Z:157
2	911 006 241	Bearing Ring
	911 006 241	Bearing Ring modified circle
3	911 164 196	Clamping flange D150 mm
4	911 164 197	Square bar flange D40X40
	911 164 125	Square bar flange D45X45
5	911 064 103	Support bolt L:190 mm
	911 164 201	Support bolt L:220 mm
6	921 509 901	Nut left hand M16
7	921 983 000	Taper Disc D19
8	921 983 100	Ball disc
9	911 006 227	Disc
10	921 509 900	Nut M16
11	911 106 805	Pressure bush 34/44,3x50,8
12	911 106 358	Bush 49,2/50,28/55,15x45
13	911 106 290	KB Locking lever
14	911 164 146	Pin D15X30
15	911 106 291	Sliding Piece
16	911 105 364	Lever shaft
17	911 005 266	Threaded pin
18	911 205 122	Washer
19	911 105 177	Regulating lever
20	911 205 215	Bush
21	911 105 376	Axle bolt
22	911 205 232	Sliding piece
23	911 205 267	Spring
24	921 551 000	Nylon stop nut
25	911 105 312	Connecting lever
26	911 105 310	Screw
27	911 106 414	Regulating lever
28	911 106 446	Clamping flange
29	911 506 152	Brass Bush Upper
30	911 506 124	Brass Bush Lower
31	911 206 333	Special Screw G1/2" 45mm
32	911 106 749	Clip 50x50 Clip 45x45

## PROJECTILE LIFTER AND OPENER



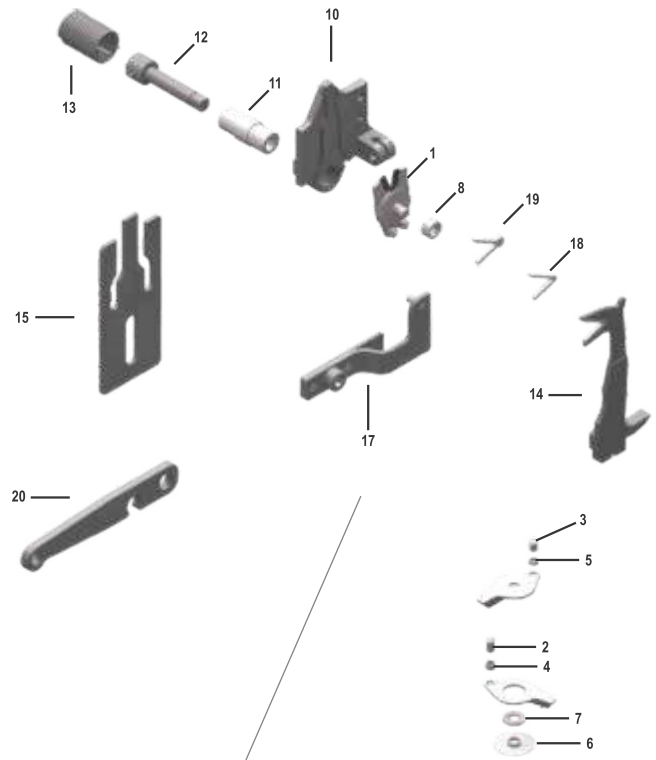
No	Art No	Designation
1	912 517 012	Lever
2	911 118 124	Eccentric axle
3	911 317 057	Upper part of proj.lifter MS D1
	911 317 055	Upper part of proj.lifter D1 ES
	911 317 056	Upper part of proj.lifter D2
	911 117 166	Upper part of proj.lifter
	911 117 137	Upper part of proj.lifter MS D1
	911 117 102	Upper part of proj.lifter ES D1
	911 317 046	Up. part of proj.lifter ES D2 hard fiber
4	912 500 002	Axle screw D9 L:29
	911 817 004	Axle screw D11 L:29
	911 118 118	Axle bolt D9 L:41
5	911 117 130	Axle ES D1 D9X124,8MM
	911 317 105	Axle MS D1 D9X114MM
6	911 318 002	SU OPENER D1
	911 318 003	SU OPENER D2
	740 400 000	SU OPENER D1 D12 12MM
	740 923 000	SU OPENER D2 12MM
7	911 117 177	BAR BORES D9/11 MM
	911 117 173	BAR BORES D9/9 MM
	911 317 208	ROD
	911 317 066	ROD D11
8	912 518 002	LEVER
	911 118 107	LEVER
9	911 118 117	CONNECTING BAR
	911 618 002	CONNECTING BAR
10	911 217 115	SPRING
	911 317 123	SPRING 6,25X76,5
11	911 117 155	Spring Plate
12	911 117 170	Ring half
13	911 319 118	Feeder opener lever
14	911 817 054	Projectile Lifter D1 Light D9mm
	911 817 058	Projectile Lifter D1 Light D12mm
	911 117 146	Projectile Lifter D1 D9mm
	911 817 053	Projectile Lifter D2 D9mm
	911 817 063	Projectile Lifter D2 D12mm
15	911 319 117	Drive axle D8/9,5/10,12x138
16	911 319 847	Feeder opener MS D1
17	911 319 841	Feeder opener D12-D2 Front
18	911 319 839	Feeder opener D12-D2 rear
19	911 319 773	Feeder opener ES D1(911119227)
20	911 319 224	Feeder opener ES D12-D2 Rear
	911 319 804	Feeder opener ES D12-D2 Rear
21	911 119 306	Feeder opener ES D12-D2 Front
	911 319 803	Feeder opener ES D12-D2 Front
22	911 117 172	Splined Shaft
	911 117 134	Splined Shaft
23	912 117 145	Bush
	911 717 001	Bush
	911 317 193	Bush 25,04/30/32x85,1
24	911 117 154	Sh lever
25	912 526 011	Roller bolt
26	911 619 034	Roller
27	911 200 217	Disc
28	911 119 128	Connecting Rod
29	911 119 285	Special Screw
30	911 119 283	EH Lever ES

## CONVEYOR CHAINS



No	Art No	Designation
1	911 831 055	Conveyor Chain D1 73"
	912 531 012	Conveyor Chain D1 85"
	912 531 013	Conveyor Chain D1 110"
	912 531 014	Conveyor Chain D1 130"
	911 831 061	Conveyor Chain D1 143"
	912 531 015	Conveyor Chain D1 153"
		Conveyor Chain D1 213"
		Conveyor Chain D1 183"
2	911 331 712	Conveyor Link D1 (911 231 173)
3	911 231 173	Chain Pin (911 331 477)
4	921 910 800	Simplex Chain 15 Links Renold
5	921 911 000	Simplex Chain 19 Links Renold
6	921 910 600	Simplex Chain 3 Links Renold
7	921 913 000	Simplex Master Link

## SCISSORS AND CENTERING BLADES

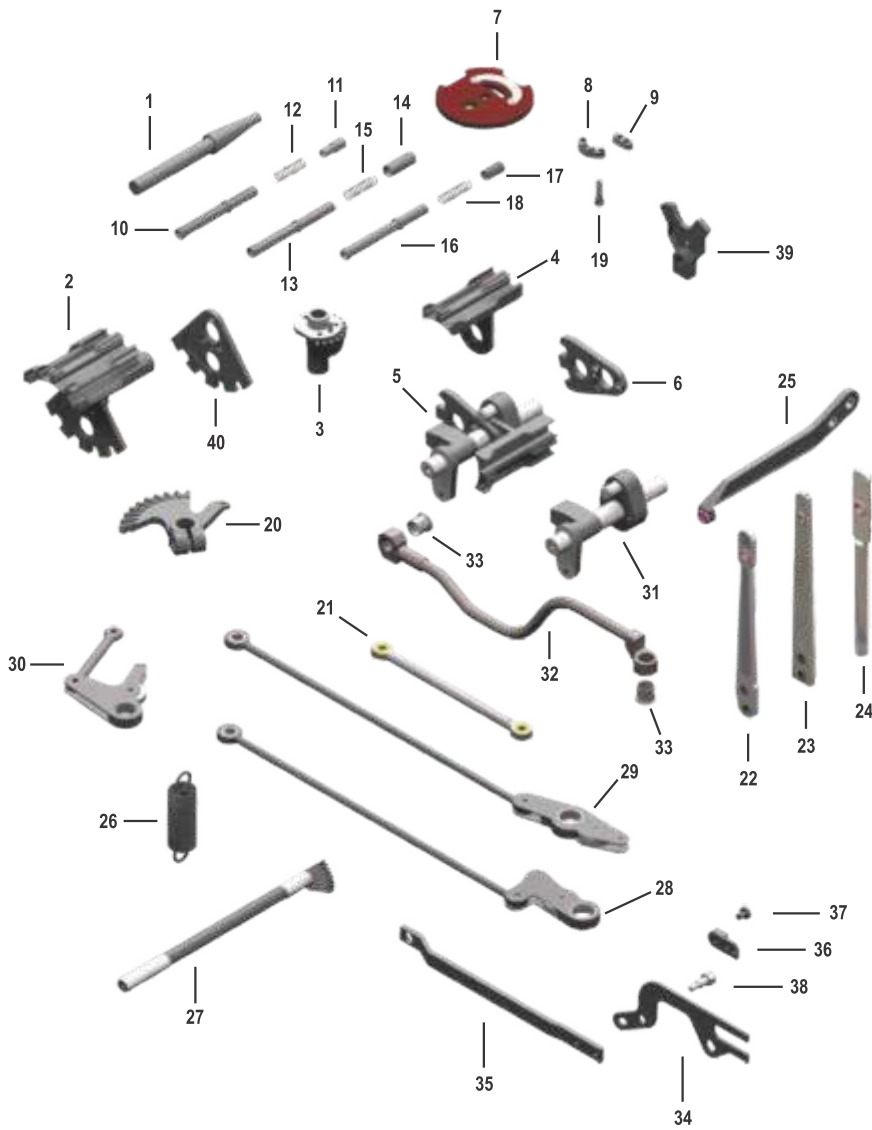


No	Art No	Designation
1	911 820 015	Scissors D1
	911 820 029	Scissors D1 D12
	911 820 016	Scissors D1 Hard Fiber
	911 820 004	Scissors D2
2	911 220 174	Control Bolt 6,65 mm
3	911 220 175	Control Bolt 5,15 mm
4	911 220 165	Control Bush 3,5 mm
5	911 220 173	Control Bush 2,20 mm
6	912 520 038	Control Bush D1 with flat spring
7	911 120 857	Space Ring
8	911 120 224	Roller D7/10X5 mm
9		Scissors repair sets 2-3-4-5-6-7-
10	912 520 003	Cam Plate D1
	912 520 041	Cam Plate D2

No	Art No	Designation
11	912 120 221	Bush
12	911 120 222	Axle
13	911 120 223	Torsion Spring
14	911 320 066	Centering Blade D1 Hard metal
	911 320 069	Centering Blade D2 Hard metal
15	911 136 170	Cam Plate for middle unit D1
	911 359 108	Cam Plate for middle unit D2
	911 359 666	Cam Plate for middle unit D12
17	912 520 076	Scissors Holder
18	911 720 002	Hard Metal insert
19	911 220 171	Ceramic insert
20	911 320 123	Rod 10/10/9,5
	911 120 215	Rod 8/10/9,5

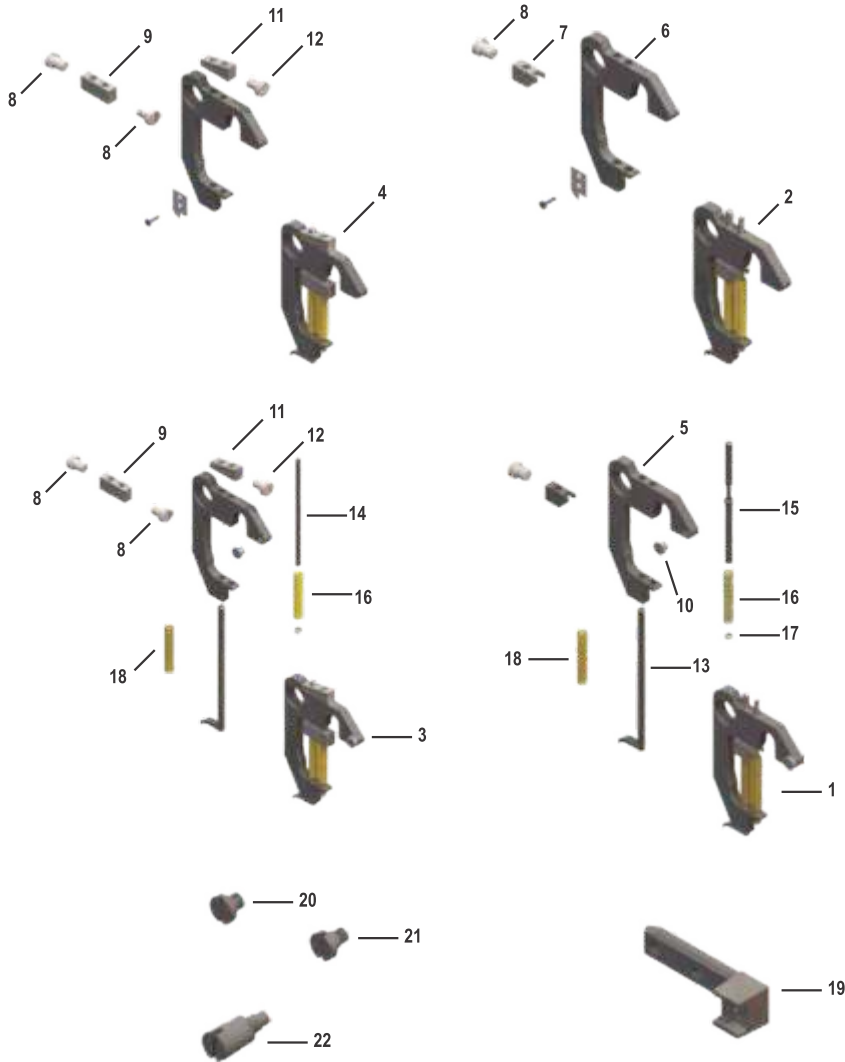


## COLOR SELECTORS



No	Art No	Designation
1	911 141 346	Selector axle
2	911 841 071	Selector Complete D1 L:90 Selector Complete D1 L:79
3	912 141 912 911 741 001	Toothed segment D1 Z:11 Toothed segment D1 Z:7
4		Selector 2 colors
5	911 840 144	Selector 2 colors complete
6		Plate for 2 colors selector
7	912 541 261	Locking Plate D1
8	911 241 120	Eyelet segment D1
9	911 340 132	Eyelet segment D1 2 colors
10	911 341 257	Thread Tube D1 5/7,1/10,8x103,4
11	911 341 136	Pressure piece D1
12	911 141 627	Pressure spring
13		Thread tube D12 9/10/12/100
14		Pressure Piece L:32
15		Pressure spring D12
16		Thread tube D2 9/10/12/98,60
17		Pressure Piece L:21,10
18		Pressure spring D 2
19	911 241 341	Special screw
20	911 141 366 911 341 064	Toothed Lever Toothed Lever
21	912 541 134	Traction Rod
22	911 814 173	Weft Tensioning lever
23	930 814 001	Weft Tensioning lever
24	912 514 281	Weft Tensioning lever
25	917 750 064 917 750 355	Weft tensioning support L:194 Weft tensioning support L:213
26	911 114 748 911 314 502	Spring Spring
27	911 141 129	Cam Driving shaft Z:6 Cam Driving shaft Z:7
28	912 514 203	Roller lever
29	912 514 204	Roller lever
30	912 514 105	Roller lever
31	911 840 119	Selector Shaft
32	911 814 154	Control Bar
33	911 314 987	Bush
34	740 939 000	Bend Bar
35	911 840 131	Rod
36	911 840 141	Stop piece
37	716 392 000	Arresting Bolt
38	911 340 616	Eccentric screw
39	715 781 000	Stop Disc
40		Toothed plate for selector VSD

## P7300 & P7350 PARTS



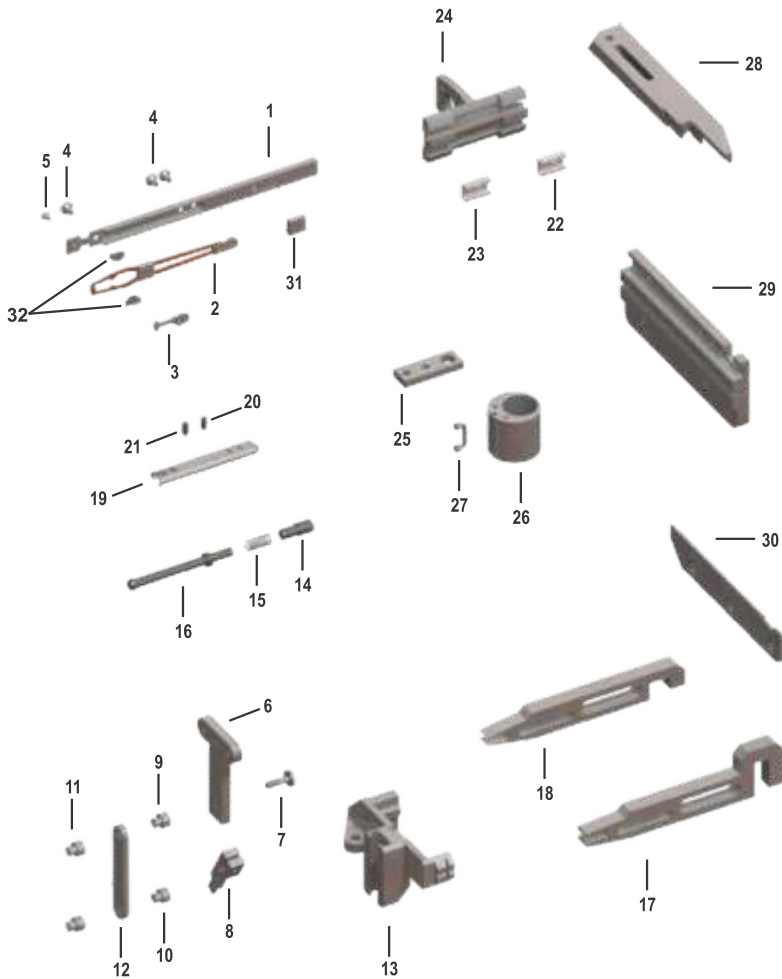
No	Art No	Designation
1	270 002 364	WEFT END GRIPPER FA 6MM SMOOTH LL
	270 002 362	WEFT END GRIPPER FA 6MM KNURLED LL
2	270 002 363	WEFT END GRIPPER SU 6MM SMOOTH LL
	270 002 359	WEFT END GRIPPER SU 6MM KNURLED LL
3	270 002 368	WEFT END GRIPPER FA 6MM SMOOTH LL
	270 002 366	WEFT END GRIPPER FA 6MM KNURLED LL
4	270 002 367	WEFT END GRIPPER SU 6MM SMOOTH LL
	270 002 365	WEFT END GRIPPER SU 6MM KNURLED LL
5	911 859 540	WEFT END GRIPPER BODY FA 6MM
	911 000 366	WEFT END GRIPPER BODY FA 6MM KNURLED
6	270 000 921	WEFT END GRIPPER BODY SU 6MM
	270 000 905	WEFT END GRIPPER BODY SU 6MM KNURLED
7	911 459 195	GUIDE PIECE 6MM
8	911 232 168	SPECIAL SCREW M3X5,6
9	742 006 001	GUIDE PIECE SELVEDGE SAVER 6MM
10	741 269 000	RIVET STUD 2/3,4/5X10
11	742 007 001	OPENER ATTACHMENT
12	719 805 000	SPECIAL SCREW M3X10
13	270 002 278	FOOT SU/FA 6MM D3X96
14	742 014 000	SPRING ROD D 3X50
15	911 459 197	SPRING ROD D 3X49
16	911 459 245	SPRING 0,40/3,9X33,50
	911 459 210	SPRING HARD 0,40/3,9X34,7
17	911 459 203	SPRING CAP 3,1/4,4X1
18	911 459 244	SPRING 0,40/3,9X28
19	741 397 000	CLAMPING PIECE
20	270 006 509	SPECIAL SCREW M5X0,50X3,5
21	270 009 373	SPRING BOLT 10X21,40
22	741 317 000	SPRING BOLT 10X23,50

## P7300 & P7350 PARTS



No	Art No	Designation
1	741 454 000	ACCELERATING CAM
2	741 601 001	WORM 1:60
	741 601 002	WORM 2:60
	741 601 003	WORM 4:60
	741 601 004	WORM 8:55
3	917 750 064	WEFT TENSIONING SUPPORT L:194
	917 750 355	WEFT TENSIONING SUPPORT L:213
4	742 693 000	TUCKING NEEDLE FA R0,5
	742 695 000	TUCKING NEEDLE FA R1
5	742 692 000	TUCKING NEEDLE SU R0,5
	742 694 000	TUCKING NEEDLE SU R1
6	270 006 051	CAM DISK HORIZONTAL SU
	270 006 052	CAM DISK HORIZONTAL FA
7	270 012 170	PROJECTILE OPENER D12 HP
8	270 005 970	OPENER FINGER SU HP (459)
9	910 000 626	PROJECTILE LIFTER D12 HP d10MM
10	270 004 678	PROJECTILE FEEDER DRIVER HP
11	740 832 000	PROJECTILE FEEDER RESILIENT LINK
12	740 275 000	LEVER L:286,2
13	910 001 195	ACCELERATING LEVER HP
14	270 002 629	RATCHET D1 D12 (Tk1 752)
15	743 118 000	CLAMPING FLANGE D:216
16	743 161 000	RING D:216
17	742 658 000	WORM WHEEL z53
18	742 659 000	WORM SHAFT z:1
19		BRAKE DISK BIG
	270 006 259	(SPRING PRESSURE BRAKE)
20		BRAKE DISK SMALL
21		PROJECTILE FEEDER DRIVER MODIFIED
		WORK TOGETHER WITH 22-23-24
22	741 087 000	PROJECTILE FEEDER LINK
23	911 319 872	ADAPTER
24	740 300 000	SLIDING BOLT
25	741 885 000	PROJECTILE GUIDE P7300 D1-D12

## P7300 & P7350 PARTS



No	Art No	Designation
1	270 014 450	WEFT FEEDER BAR WITH DRIVER
	270 008 344	
2	270 013 341	GRIPPER PAIR GROOVE/GROOVE 15N D12 HP
	270 013 362	GRIPPER PAIR KNURLED 15N D12 HP
	270 009 764	
	270 013 314	GRIPPER PAIR SMOOTH/KNURLED 15ND12HP
	270 009 760	
	270 013 422	GRIPPER PAIR SMOOTH/GROOVE 15ND12HP
	270 010 085	
3	270 013 692	STEEL BRIDGE NR 25PP
	270 013 866	STEEL BRIDGE NR 3B
4	270 013 900	CENTERING SCREW M4X0,50X4,6
5	270 013 637	COUNTERSUNK SCREW M2,5X0,35X3,2
6	715 411 000	GUIDE HOLDER
7	911 414 552	SPECIAL SCREW M4X6,7/4X9
8	917 750 344	CLAMPING LEVEL D:5
9	716 619 000	WAIST BUSH 4/6/9,4X6,3
10	911 414 581	WAIST BUSH 4/6/9,4X9,3
11	921 866 829	NUT M4
12	911 414 609	ROD L:68
13	911 814 369	GUIDE PIECE
14	740 321 000	EYELET D:6
15	722 332 000	SPRING 0,90/10,3X25
16	740 003 000	FILLING TUBE D:6 L:91
17	270 010 953	FEEDER OPENER FRONT D12 HP
18	270 010 954	FEEDER OPENER REAR D12 HP
19	910 000 542	PROJECTILE BODY D12 XLP HP
20	270 004 485	PROJECTILE BOLT PEEK HP 4,5X6,3
21	270 000 188	PROJECTILE BOLT HP 4,5X6,3
22	270 004 332	INSERT FRONT GROOVE HP
23	271 004 331	INSERT REAR GROOVE HP
24	270 011 312	SELECTOR 2 HP
	270 007 791	
25	910 000 951	STOP
26	911 304 496	DAMPING BUSH
27	911 304 491	BOW
28	740 739 000	USER GUIDE RAIL D1,D12
	740 954 000	UPPER GUIDE RAIL D2
	740 366 000	UPPER GUIDE RAIL D1-D12
29	270 000 699	CENTERING RAIL
30	740 915 000	PICKING GUIDE RAIL D1/D12 L:173,50
31	270 008 347	SUPPORT HP
32	270 008 348	SUPPORT HP

## Our Global Foot Print



### ARUN SHUTTLE INDUSTRIES

**Works:** 70, Union Estate, Rakhial, Ahmedabad-380023, India.  
**Office:** A-1003/1004, Sankalp Iconic Tower, Nr. ISRO Colony,  
Bopal Ambli Road, Ahmedabad-380054. India.

+91 79 4009 0950

info@galaxyproduct.com

www.galaxyproduct.com